

# Rates of Fire Events at U.S. Nuclear Power Plants 1987–2004

The fire study uses operating experience to characterize the frequency and nature of fire event data from operating U.S. commercial nuclear power plants.

This report presents an analysis of fire event frequencies at United States (U.S.) nuclear power plants. The evaluation is based on the operating experience from 1987 through 2004. The data sources for this report include:

- License Event Reports (LERs), 1987 to 2004
- Nuclear Plant Reliability Data System (NPRDS), 1987 to 1996
- Equipment Performance and Information Exchange (EPIX), 1997 to 2004
- Electric Power Research Institute (EPRI), 1986 to 1988
- National Electric Insurers Limited (NEIL), 1993 to 2003.

This report updates the Office for Analysis and Evaluation of Operational Data (AEOD) report AEOD/S97-03, “*Special Study, Fire Events – Feedback of U.S. Operating Experience*,” June 1997, updating data, frequency estimates, trends, and figures.

## 1 LATEST FREQUENCIES AND TRENDS

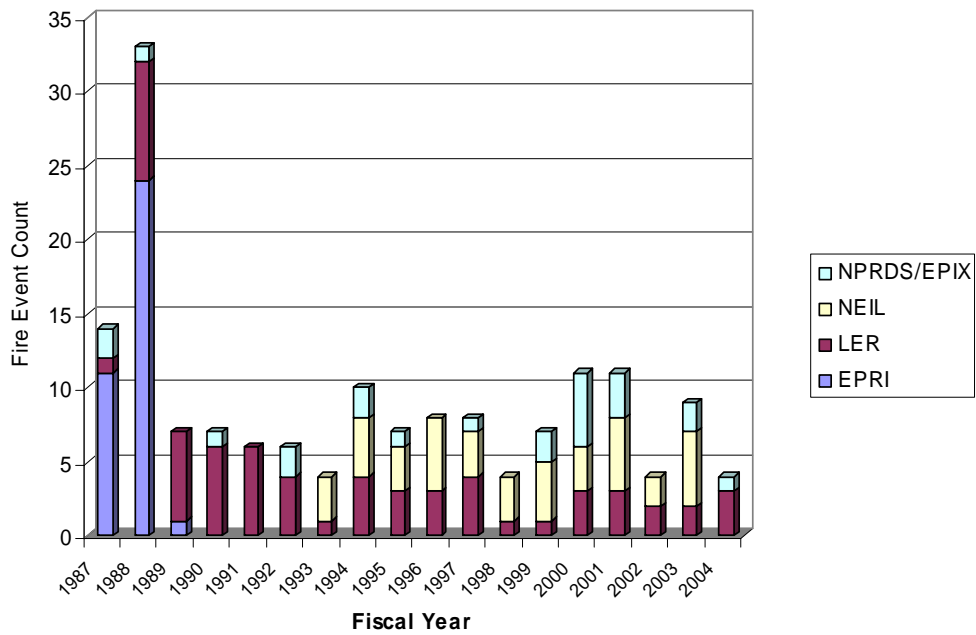
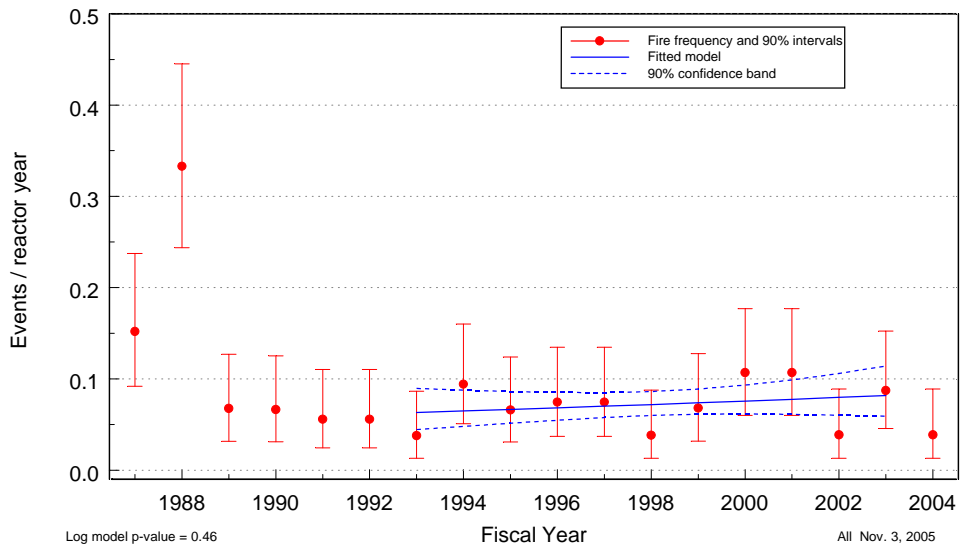
### 1.1 Fire Event Occurrences by Year

Fire frequency trends are plotted for fires that are of sufficient duration and size to be called “severe.” [Figure 1](#) shows the trend of fires for all plant conditions, the trend is not statistically significant<sup>1</sup>. [Figure 2](#) shows the trend of fires for at-power conditions, the trend is also not statistically significant. [Figure 3](#) shows the trend of fires for at-shutdown conditions, the trend is not statistically significant. [Table 1](#), [Table 2](#), and [Table 3](#) show the data points for these figures.

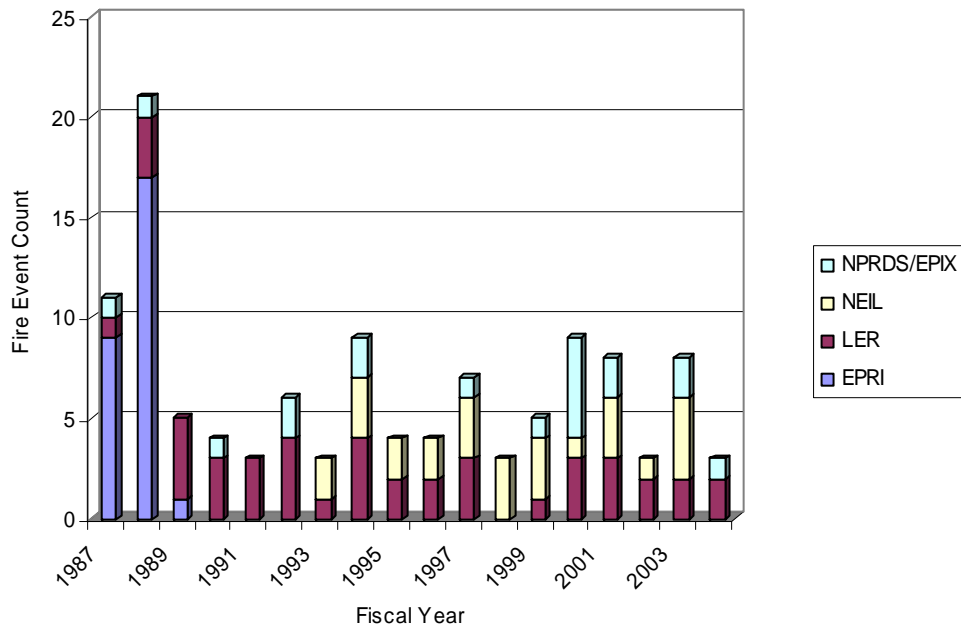
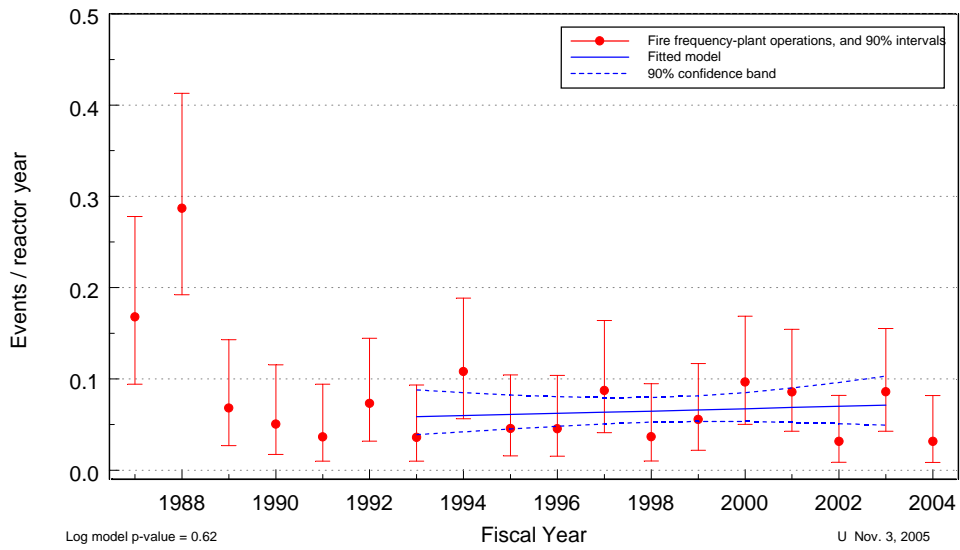
For each trend plot, a histogram based on the same data set shows the data source for the fire events. These histograms show that the data sources are only consistent from fiscal year 1993 to fiscal year 2003. Therefore, trend lines and trend significance are only evaluated through this period.

---

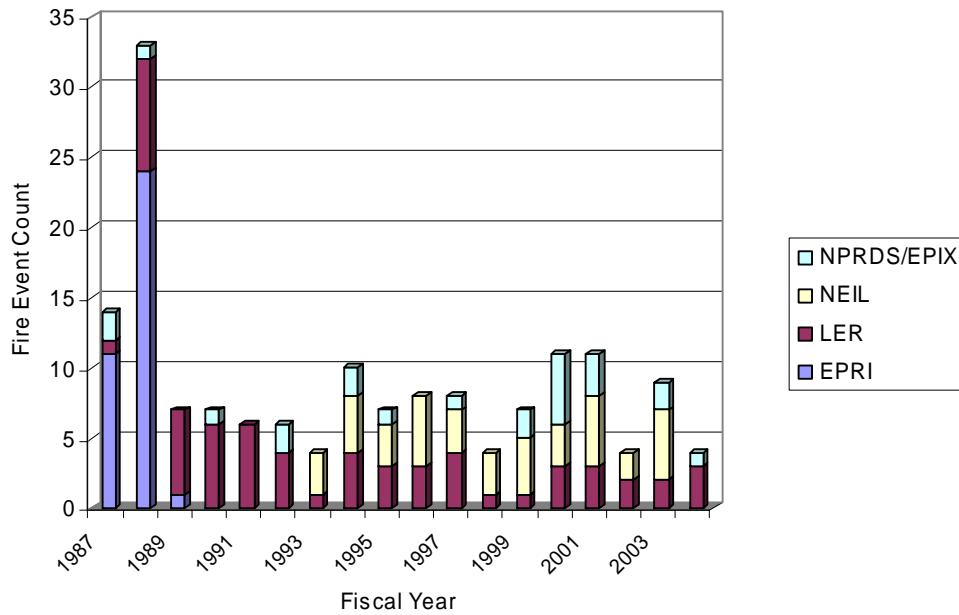
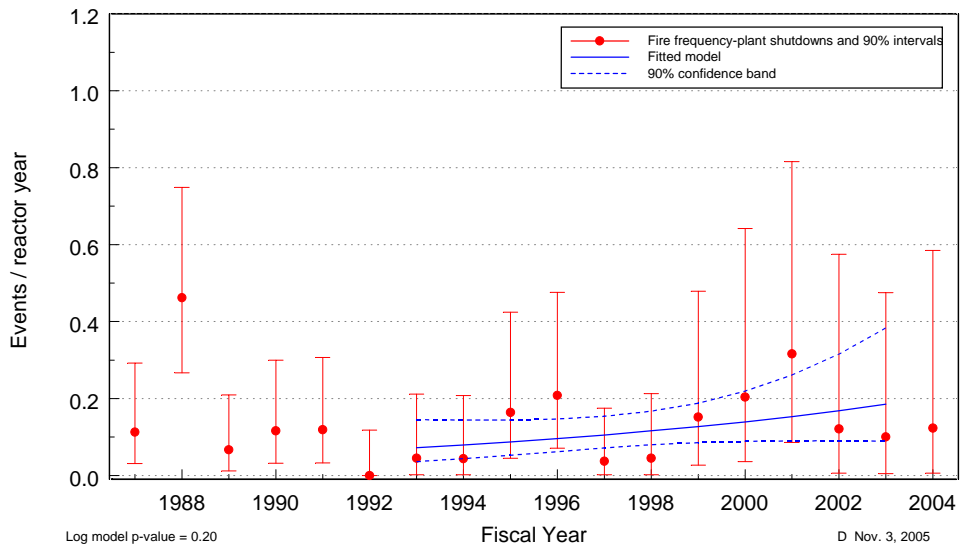
<sup>1</sup> Statistically significant is defined in terms of the ‘p-value.’ A p-value is a probability indicating whether to accept or reject the null hypothesis that there is no trend in the data. P-values of less than or equal to 0.05 indicate that we are 95% confident that there is a trend in the data (reject the null hypothesis of no trend.) By convention, we use the “Michelin Guide” scale: p-value < 0.05 (statistically significant), p-value < 0.01 (highly statistically significant); p-value < 0.001 (extremely statistically significant).



**Figure 1. Fire events by fiscal year for plant at power and shutdown.**



**Figure 2. Fire events by fiscal year for plant at power.**



**Figure 3. Fire events by fiscal year for plant shutdown.**

## 2 FIRE DATA SUMMARY

The raw fire event data were sliced to show selected distributions. These distributions are based on all modes of operation and all severities of fires.

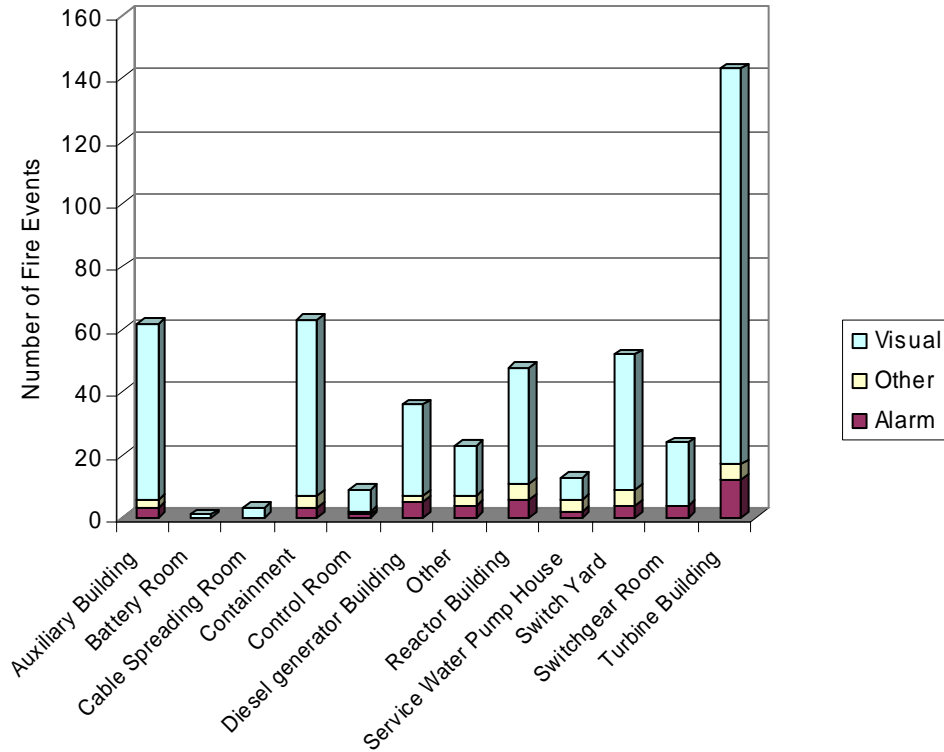


Figure 4. Distribution of fire events by plant location and fire discovery method.

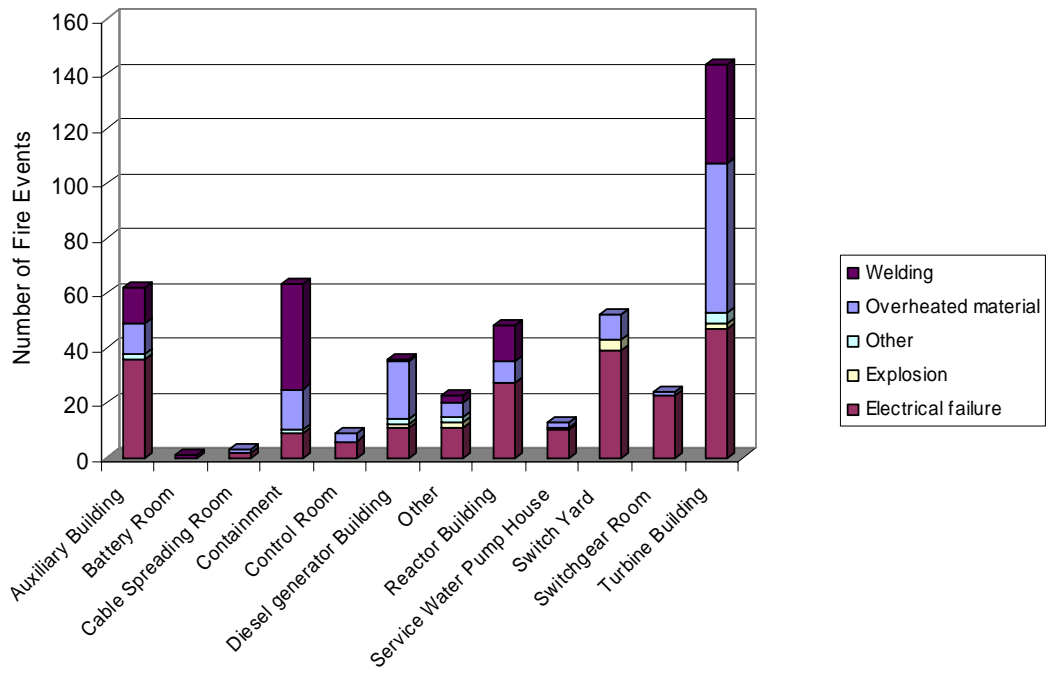


Figure 5. Distribution of fire events by plant location and cause.

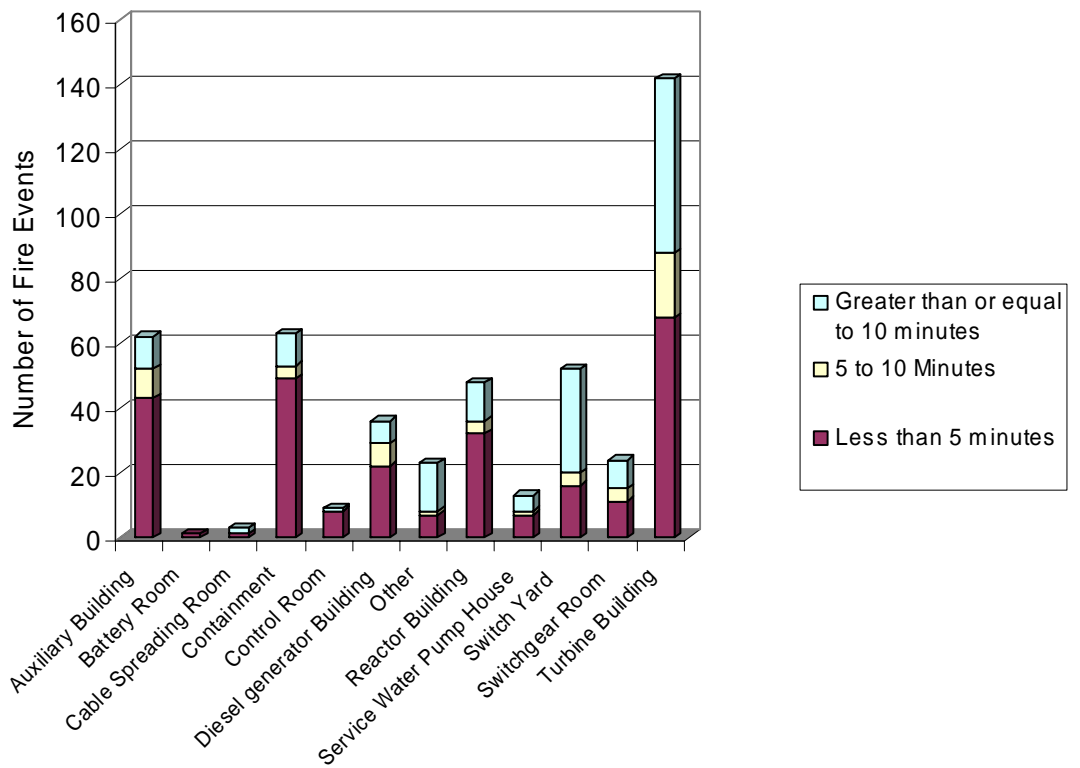
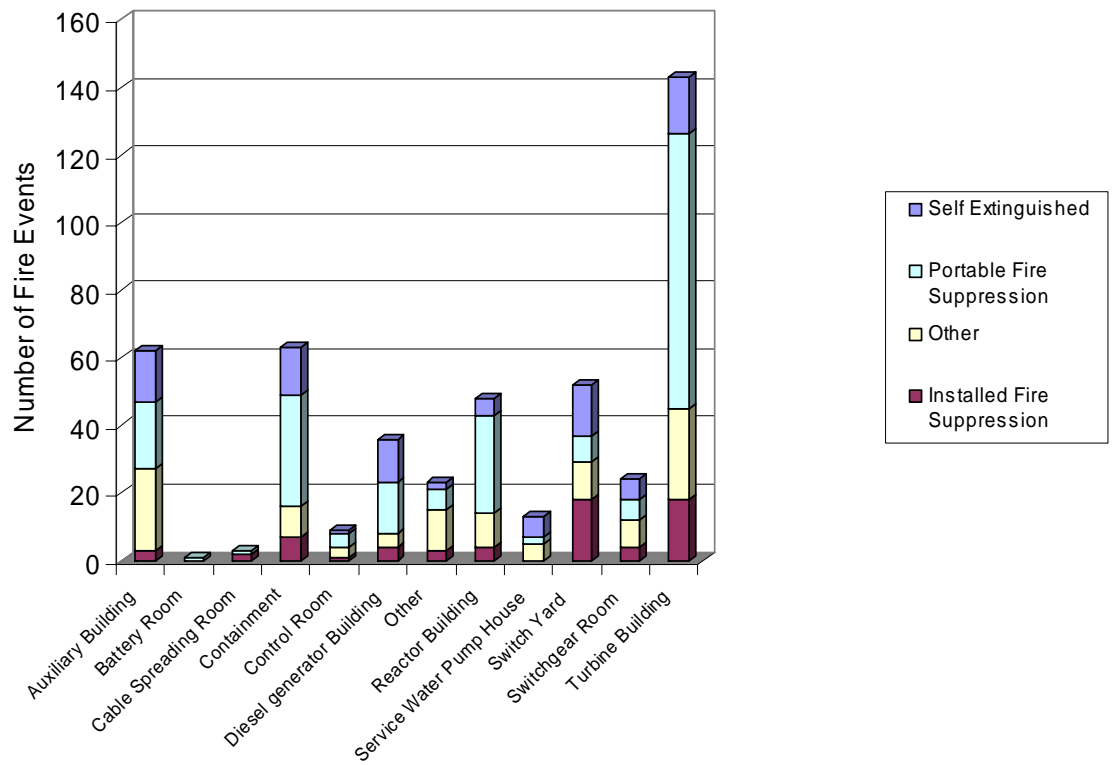


Figure 6. Distribution of fire events by plant location and fire duration.



**Figure 7. Distribution of fire events by plant location and method of suppression.**





### 3 DATA TABLES

#### 3.1 Data Tables for Fire Event Trends

**Table 1. Fire events all modes of operation. Figure 1**

Fiscal Year	Plot Trend Error Bar Points			Regression Curve Data Points		
	Lower (5%)	Mean	Upper (95%)	Lower (5%)	Mean	Upper (95%)
1987	9.18E-02	1.52E-01	2.37E-01	.	.	.
1988	2.44E-01	3.33E-01	4.45E-01	.	.	.
1989	3.17E-02	6.76E-02	1.27E-01	.	.	.
1990	3.13E-02	6.66E-02	1.25E-01	.	.	.
1991	2.43E-02	5.59E-02	1.10E-01	.	.	.
1992	2.43E-02	5.59E-02	1.10E-01	.	.	.
1993	1.29E-02	3.79E-02	8.67E-02	4.46E-02	6.32E-02	8.96E-02
1994	5.12E-02	9.43E-02	1.60E-01	4.80E-02	6.49E-02	8.77E-02
1995	3.10E-02	6.60E-02	1.24E-01	5.14E-02	6.66E-02	8.62E-02
1996	3.71E-02	7.46E-02	1.35E-01	5.48E-02	6.83E-02	8.52E-02
1997	3.71E-02	7.46E-02	1.35E-01	5.78E-02	7.01E-02	8.51E-02
1998	1.31E-02	3.84E-02	8.78E-02	6.00E-02	7.19E-02	8.62E-02
1999	3.19E-02	6.80E-02	1.28E-01	6.13E-02	7.38E-02	8.89E-02
2000	5.99E-02	1.07E-01	1.77E-01	6.16E-02	7.57E-02	9.32E-02
2001	5.99E-02	1.07E-01	1.77E-01	6.11E-02	7.77E-02	9.89E-02
2002	1.33E-02	3.88E-02	8.89E-02	6.02E-02	7.98E-02	1.06E-01
2003	4.56E-02	8.74E-02	1.52E-01	5.90E-02	8.18E-02	1.14E-01
2004	1.33E-02	3.88E-02	8.89E-02	.	.	.

**Table 2. Fire events at power. Figure 2**

Fiscal Year	Plot Trend Error Bar Points			Regression Curve Data Points		
	Lower (5%)	Mean	Upper (95%)	Lower (5%)	Mean	Upper (95%)
1987	9.41E-02	1.68E-01	2.78E-01	.	.	.
1988	1.92E-01	2.87E-01	4.13E-01	.	.	.
1989	2.68E-02	6.81E-02	1.43E-01	.	.	.
1990	1.72E-02	5.05E-02	1.16E-01	.	.	.
1991	9.95E-03	3.65E-02	9.43E-02	.	.	.
1992	3.19E-02	7.32E-02	1.44E-01	.	.	.
1993	9.83E-03	3.61E-02	9.32E-02	3.91E-02	5.87E-02	8.81E-02
1994	5.64E-02	1.08E-01	1.89E-01	4.21E-02	5.99E-02	8.51E-02
1995	1.56E-02	4.56E-02	1.04E-01	4.52E-02	6.11E-02	8.25E-02
1996	1.55E-02	4.54E-02	1.04E-01	4.81E-02	6.23E-02	8.05E-02
1997	4.10E-02	8.74E-02	1.64E-01	5.07E-02	6.35E-02	7.95E-02
1998	9.98E-03	3.66E-02	9.47E-02	5.26E-02	6.47E-02	7.97E-02
1999	2.19E-02	5.56E-02	1.17E-01	5.34E-02	6.60E-02	8.16E-02
2000	5.04E-02	9.66E-02	1.69E-01	5.33E-02	6.73E-02	8.51E-02
2001	4.26E-02	8.56E-02	1.54E-01	5.24E-02	6.87E-02	9.00E-02
2002	8.63E-03	3.17E-02	8.18E-02	5.10E-02	7.00E-02	9.61E-02
2003	4.28E-02	8.60E-02	1.55E-01	4.94E-02	7.14E-02	1.03E-01
2004	8.62E-03	3.16E-02	8.17E-02	.	.	.

**Table 3. Fire events with plant shutdown. Figure 3**

Fiscal Year	Plot Trend Error Bar Points			Regression Curve Data Points		
	Lower (5%)	Mean	Upper (95%)	Lower (5%)	Mean	Upper (95%)
1987	3.07E-02	1.13E-01	2.91E-01	.	.	.
1988	2.67E-01	4.62E-01	7.49E-01	.	.	.
1989	1.18E-02	6.66E-02	2.10E-01	.	.	.
1990	3.17E-02	1.16E-01	3.00E-01	.	.	.
1991	3.24E-02	1.19E-01	3.07E-01	.	.	.
1992	0.00E+00	0.00E+00	1.18E-01	.	.	.
1993	2.29E-03	4.47E-02	2.12E-01	3.59E-02	7.21E-02	1.45E-01
1994	2.25E-03	4.39E-02	2.08E-01	4.36E-02	7.92E-02	1.44E-01
1995	4.47E-02	1.64E-01	4.24E-01	5.25E-02	8.71E-02	1.44E-01
1996	7.11E-02	2.08E-01	4.77E-01	6.21E-02	9.57E-02	1.47E-01
1997	1.90E-03	3.70E-02	1.75E-01	7.17E-02	1.05E-01	1.54E-01
1998	2.30E-03	4.48E-02	2.12E-01	7.99E-02	1.16E-01	1.67E-01
1999	2.71E-02	1.52E-01	4.79E-01	8.56E-02	1.27E-01	1.88E-01
2000	3.62E-02	2.04E-01	6.41E-01	8.88E-02	1.39E-01	2.19E-01
2001	8.60E-02	3.16E-01	8.16E-01	9.00E-02	1.53E-01	2.61E-01
2002	6.21E-03	1.21E-01	5.75E-01	9.01E-02	1.68E-01	3.15E-01
2003	5.13E-03	1.00E-01	4.75E-01	8.94E-02	1.85E-01	3.83E-01
2004	6.32E-03	1.23E-01	5.85E-01	.	.	.