

System Study: Emergency Power System 1998–2024

DECEMBER 2025

Zhegang Ma

Idaho National Laboratory



DISCLAIMER

This information was prepared as an account of work sponsored by an agency of the U.S. Government. Neither the U.S. Government nor any agency thereof, nor any of their employees, makes any warranty, expressed or implied, or assumes any legal liability or responsibility for the accuracy, completeness, or usefulness, of any information, apparatus, product, or process disclosed, or represents that its use would not infringe privately owned rights. References herein to any specific commercial product, process, or service by trade name, trade mark, manufacturer, or otherwise, does not necessarily constitute or imply its endorsement, recommendation, or favoring by the U.S. Government or any agency thereof. The views and opinions of authors expressed herein do not necessarily state or reflect those of the U.S. Government or any agency thereof.

**System Study:
Emergency Power System
1998–2024**

**Zhegang Ma
Idaho National Laboratory**

December 2025

**Idaho National Laboratory
Idaho Falls, Idaho 83415**

<http://www.inl.gov>

**Prepared for the
Division of Risk Analysis
Office of Nuclear Regulatory Research
U.S. Nuclear Regulatory Commission
NRC Agreement Number 31310024S0038**

Page intentionally left blank

ABSTRACT

This report presents an unreliability evaluation of the emergency power system (EPS) at 93 U.S. commercial operating nuclear reactors. New Standardized Plant Analysis Risk (SPAR) models with the most recent SPAR parameter update results were used in this report. Demand, run hour, and failure data from 1998 to 2024 for selected components were obtained from the Institute of Nuclear Power Operations Industry Reporting and Information System. The unreliability results are trended for the most recent 10-year period while yearly estimates for system unreliability are provided for the entire active period. No statistically significant increasing or decreasing trends were identified in the industry-wide estimates of EPS system start-only unreliability, but a statistically significant decreasing trend was identified in the industry-wide estimates of EPS system 24-hour mission unreliability.

Page intentionally left blank

CONTENTS

ABSTRACT.....	v
ACRONYMS.....	ix
1. INTRODUCTION.....	1
2. SUMMARY OF FINDINGS	5
3. INDUSTRY-WIDE UNRELIABILITY	6
4. INDUSTRY-WIDE TRENDS	8
5. BASIC EVENT GROUP IMPORTANCES	10
6. DATA TABLES.....	14
7. SYSTEM DESCRIPTION	20
8. REFERENCES.....	25

FIGURES

Figure 1. EPS start-only unreliability for Class 2, 3, and 4 and industry-wide groupings.....	7
Figure 2. EPS 24-hour mission unreliability for Class 2, 3, and 4 and industry-wide groupings.....	7
Figure 3. Trend of EPS system start-only unreliability.....	8
Figure 4. Trend of EPS system 24-hour mission unreliability.....	9
Figure 5. EPS industry-wide basic event group importances.	10
Figure 6. EPS Class 2 basic event group importances.	12
Figure 7. EPS Class 3 basic event group importances.	12
Figure 8. EPS Class 4 basic event group importances.	13
Figure 9. Simplified EPS system schematic.	24

TABLES

Table 1. EPS class and SPAR model version summary.....	2
Table 2. Industry-wide unreliability values.	6
Table 3. EPS model basic event importance group descriptions.	11
Table 4. Plot data for Figure 3, EPS start-only unreliability trend.	14
Table 5. Plot data for Figure 4, EPS 24-hour mission unreliability trend.....	15
Table 6. Basic event reliability trending data.....	16
Table 7. Basic event unavailability (UA) trending data.....	19
Table 8. Failure mode acronyms.....	19
Table 9. EPS configurations at U.S. commercial operating nuclear reactors.	21

Page intentionally left blank

ACRONYMS

CCF	common-cause failure
EDG	emergency diesel generator
EPIX	Equipment Performance and Information Exchange
EPS	emergency power system
FTLR	fail to load/run
FTR	fail to run
FTS	fail to start
GTG	gas turbine generator
HTG	hydro turbine generator
ICES	INPO Consolidated Events Database
INPO	Institute of Nuclear Power Operations
IRIS	Industry Reporting and Information System
LOOP	loss-of-offsite power
MSPI	Mitigating Systems Performance Index
NRC	Nuclear Regulatory Commission
PRA	probabilistic risk assessment
ROP	Reactor Oversight Process
SBO	station blackout
SPAR	standardized plant analysis risk
SSU	safety system unavailability
TDP	turbine-driven pump
UA	unavailability (maintenance or state of another component)

Page intentionally left blank

System Study: Emergency Power System 1998–2024

1. INTRODUCTION

This report presents an unreliability evaluation of the emergency power system (EPS) at 93 U.S. commercial operating nuclear reactors listed in Table 1. For each reactor (or plant), the corresponding Standardized Plant Analysis Risk (SPAR) model was used in the yearly calculations. Demand, run hour, and failure data from calendar years 1998 to 2024 for selected components in the EPS were obtained from the Institute of Nuclear Power Operations (INPO) Industry Reporting and Information System (IRIS), formerly the INPO Consolidated Events Database (ICES) and the Equipment Performance and Information Exchange Database (EPIX). Train unavailability data (outages from test or maintenance) were obtained from the Reactor Oversight Process (ROP) Safety System Unavailability (SSU) database (1998–2001) and the Mitigating Systems Performance Index (MSPI) database (2002–2024). The system unreliability results are trended for the most recent 10-year period while yearly estimates for system unreliability are provided for the entire active period.

This report does not attempt to estimate basic event values for use in a probabilistic risk assessment (PRA). Suggested values for such use are presented in the 2020 SPAR parameter update^a including INL/EXT-21-65055, *Industry Average Performance for Components and Initiating Events at U.S. Commercial Nuclear Power Plants: 2020 Update* [1], which is the most recent update to NUREG/CR-6928 [2], and INL/EXT-21-62940, *CCF Parameter Estimations, 2020 Update* [3], for common-cause failure (CCF) parameters.

To ensure valid comparisons, the same SPAR models and basic event data must be used across the analyses in the system studies, with only annual component-specific data (e.g., demand, run hours, failures, and unavailability) allowed to vary. However, periodic updates to SPAR models are necessary to reflect current plant and system configurations and industry performance baselines. With the completion of the 2020 SPAR parameter and model updates in 2022, it was an appropriate point to utilize the new set of SPAR models for system study updates. Since the 2022 version of this report [4], updated SPAR models (versions of 8.80 or later, as listed in Table 1) incorporating the 2020 SPAR parameter update results [1, 3] have been used. In contrast, earlier versions of this report, from 2011 through 2020,^b relied on older SPAR models (versions 8.1 to 8.2) and the *2010 Component Reliability Update* [5] for basic event data.^c

The EPS classes were categorized by the design considerations and configurations. Class 2 EPS includes configurations that effectively result in a success criterion of one of two emergency diesel generators (EDGs) (or other emergency power sources). Class 3 EPS includes configurations that effectively result in a success criterion of one of three EDGs (or other emergency power sources). EPS designs effectively resulting in a success criterion of one of four or more are included in Class 4. Table 1 summarizes the plants, their EPS classes, and the SPAR model versions used in this study.

-
- a. Appendix B of INL/RPT-25-86864, *Enhanced Component Performance Study: Emergency Diesel Generators 1998–2024* [7], provides a comparative overview of the three primary update activities under the NRC’s operating experience data analysis program: the SPAR Parameter Update, the Component Performance Study Update, and the System Study Update. It summarizes their respective purposes, methodologies, data periods, and other key considerations.
 - b. All current and earlier system study reports are available on the Nuclear Regulatory Commission (NRC) Reactor Operational Experience Results and Databases website (<https://nrcoe.inl.gov/SysStudy>).
 - c. The SPAR models incorporating the *2015 Component Reliability Update* [8] for basic event data were not used in the system study updates.

The EPS model is evaluated using the loss-of-off-site power (LOOP) flag set in the SPAR model. The LOOP flag set assumes all ac power is unavailable and that the EPS is required to perform to mitigate the effects of the LOOP initiating event. All models include failures due to unavailability while in test or maintenance. Human error and recovery events in the models are set to “False” in the study for the results to represent the mechanical part of the system. An overview of the trending methods, glossary of terms, and abbreviations can be found in the *Overview and Reference* document [6] on the NRC web page (<https://nrcoe.inl.gov>).

Two variations of the EPS system model are implemented and calculated. The EPS start-only model is the EPS SPAR model modified by setting all fail-to-run basic events to zero (“False”), unit crosstie events to “False,” all human error and recovery events to “Ignore,” and all cooling basic events to “False.” The 24-hour mission model is the EPS SPAR model modified by setting all human error and recovery events to “Ignore.”

Section 2 of this report summarizes the main findings from the study. Section 3 presents the baseline EPS unreliability results using basic event values from the 2020 SPAR parameter update. Section 4 shows the trend results for EPS unreliability using system-specific data as listed in Section 6. Section 5 provides the basic event group importance information using the baseline results from Section 3. Section 7 presents a high-level generic description of the EPS system.

Table 1. EPS class and SPAR model version summary.

Class	Plant	SPAR ID	SPAR Version
Class 2	Beaver Valley 1	BVS1	8.80
Class 2	Beaver Valley 2	BVS2	8.80
Class 2	Brunswick 1	BRU1	8.80
Class 2	Brunswick 2	BRU2	8.80
Class 2	Callaway	CALL	8.80
Class 2	Clinton 1	CLNT	8.80
Class 2	Columbia 2	COLM	8.80
Class 2	Comanche Peak 1 & 2	COPK	8.81
Class 2	Cook 1 & 2	COOK	8.81
Class 2	Cooper	COOP	8.80
Class 2	Davis-Besse	DAVB	8.81
Class 2	Ginna	GINA	8.80
Class 2	Grand Gulf	GGUL	8.80
Class 2	Harris	HARR	8.81
Class 2	McGuire 1 & 2	MCGU	8.80
Class 2	Monticello	MONT	8.81
Class 2	Nine Mile Pt. 1	NMP1	8.80
Class 2	Nine Mile Pt. 2	NMP2	8.80
Class 2	Oconee 1, 2 & 3	OCON	8.80
Class 2	Palisades	PALI	8.80
Class 2	Perry	PERY	8.80

Table 1. (continued).

Class	Plant	SPAR ID	SPAR Version
Class 2	Robinson 2	ROBN	8.80
Class 2	Seabrook	SBRK	8.80
Class 2	Summer	SUMM	8.80
Class 2	Waterford 3	WTRF	8.80
Class 2	Wolf Creek	WOLF	8.80
Class 3	Arkansas 1	ANO1	8.80
Class 3	Arkansas 2	ANO2	8.81
Class 3	Braidwood 1 & 2	BRWD	8.81
Class 3	Byron 1 & 2	BYRN	8.81
Class 3	Calvert Cliffs 1	CCF1	8.80
Class 3	Calvert Cliffs 2	CCF2	8.80
Class 3	Catawba 1 & 2	CATA	8.81
Class 3	Diablo Canyon 1 & 2	DCAN	8.81
Class 3	Farley 1 & 2	FARL	8.81
Class 3	Hatch 1 & 2	HATC	8.82
Class 3	Hope Creek	HOPE	8.80
Class 3	LaSalle 1 & 2	LSAL	8.81
Class 3	Millstone 2	MIL2	8.80
Class 3	Millstone 3	MIL3	8.80
Class 3	Palo Verde 1, 2, & 3	PVNG	8.80
Class 3	Peach Bottom 2	PBT2	8.80
Class 3	Peach Bottom 3	PBT3	8.80
Class 3	River Bend	RIVB	8.80
Class 3	Salem 1 & 2	SALM	8.80
Class 3	Sequoyah 1 & 2	SEQH	8.80
Class 3	South Texas 1 & 2	STEX	8.80
Class 3	St. Lucie 1	STL1	8.80
Class 3	St. Lucie 2	STL2	8.80
Class 3	Surry 1&2	SURY	8.80
Class 3	Susquehanna 1	SUS1	8.82
Class 3	Susquehanna 2	SUS2	8.80
Class 3	Turkey Point 3 & 4	TKPT	8.80
Class 3	Vogtle 1 & 2	VOGT	8.80
Class 3	Watts Bar 1&2	WB12	8.80

Table 1. (continued).

Class	Plant	SPAR ID	SPAR Version
Class 4	Browns Ferry 1	BRF1	8.80
Class 4	Browns Ferry 2	BRF2	8.80
Class 4	Browns Ferry 3	BRF3	8.80
Class 4	Dresden 2 & 3	DRES	8.81
Class 4	Fermi 2	FERM	8.80
Class 4	FitzPatrick	FITZ	8.80
Class 4	Limerick 1	LIM1	8.80
Class 4	Limerick 2	LIM2	8.82
Class 4	North Anna 1 & 2	NANN	8.80
Class 4	Point Beach 1 & 2	PBCH	8.80
Class 4	Prairie Island 1 & 2	PRAI	8.80
Class 4	Quad Cities 1 & 2	QCTY	8.80

2. SUMMARY OF FINDINGS

The results of this EPS system unreliability study are summarized in this section. Of particular interest is any statistically significant^d increasing trend. In this update, **no statistically significant increasing or decreasing trends** were identified in the industry-wide estimates of **EPS system start-only unreliability**, but a **statistically significant decreasing trend** was identified in the industry-wide estimates of **EPS system 24-hour mission unreliability** for the most recent 10-year period.

The industry-wide EPS start-only and 24-hour basic event group importances were evaluated. For both **start-only and 24-hour mission**, the **leading contributor to EPS system unreliability** is the **1E Generator** group of basic events followed by the **Cooling** and **AC Power** groups.

d. Statistically significant is defined in terms of the “p-value.” A p-value is a probability indicating whether to accept or reject the null hypothesis that there is no trend in the data. P-values less than or equal to 0.05 indicate that we are 95% confident that there is a trend in the data (reject the null hypothesis of no trend.) By convention, we use the “Michelin Guide” scale: p-value < 0.05 (statistically significant); p-value < 0.01 (highly statistically significant); p-value < 0.001 (extremely statistically significant).

3. INDUSTRY-WIDE UNRELIABILITY

The EPS fault trees from the SPAR models were evaluated for each of the 93 U.S. commercial operating nuclear reactors.

The industry-wide unreliability of the EPS was estimated for two variations. A start-only model and a 24-hour mission model were evaluated (see Table 2). The uncertainty distributions for the EPS classes include both plant design variability (within a class) and parameter uncertainty while using industry-wide component failure data from the 2020 SPAR parameter update [1].^e Table 2 shows the percentiles and mean of the aggregated sample data (Latin hypercube, 1,000 samples for each model) collected from the uncertainty calculations of the EPS fault trees in the SPAR models. In Figure 1 and Figure 2, the 5th and 95th percentiles and mean point estimates are shown for each class and for the industry.

In Figure 1 and Figure 2, the width of the distribution for a class is affected by the differences in the plant modeling and the parameter uncertainty used in the models.

Table 2. Industry-wide unreliability values.

Model	EPS Grouping	Lower (5%)	Median	Mean	Upper (95%)
Start-Only	Industry	2.04E-08	4.34E-05	5.74E-04	2.74E-03
	Class 2	2.55E-07	2.43E-04	9.24E-04	3.80E-03
	Class 3	1.35E-09	2.95E-05	3.91E-04	2.05E-03
	Class 4	9.69E-08	1.33E-05	2.56E-04	1.50E-03
24-Hour Mission	Industry	4.76E-08	2.42E-04	1.79E-03	7.83E-03
	Class 2	8.10E-07	1.76E-03	2.97E-03	1.00E-02
	Class 3	4.24E-09	1.70E-04	1.28E-03	6.22E-03
	Class 4	1.43E-06	4.73E-05	4.45E-04	2.49E-03

e. By using industry-wide component failure data, individual plant performance is not included in the distribution of results.

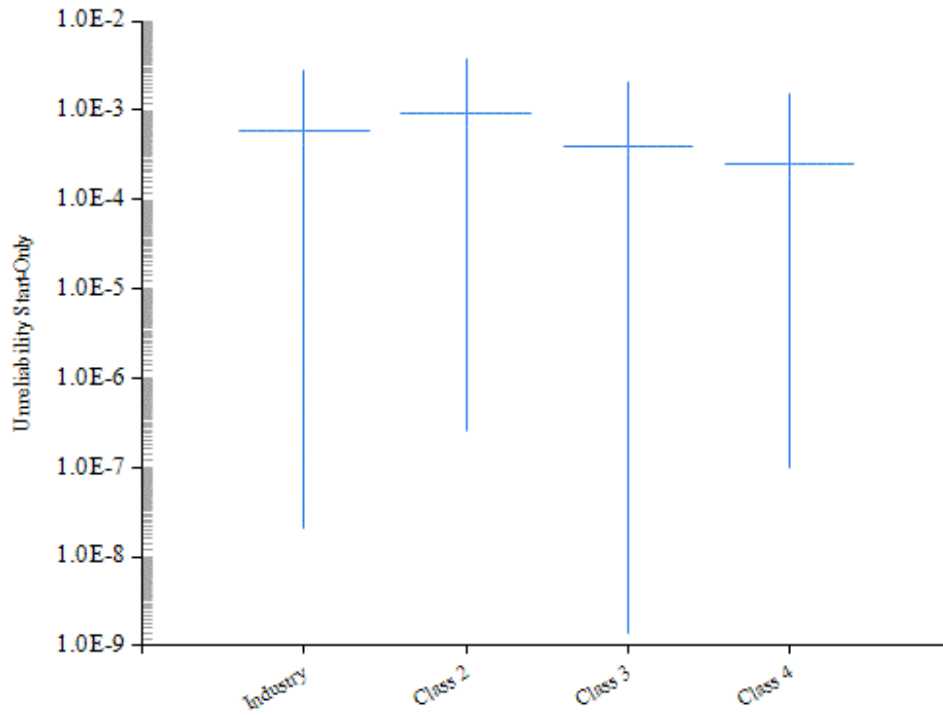


Figure 1. EPS start-only unreliability for Class 2, 3, and 4 and industry-wide groupings.

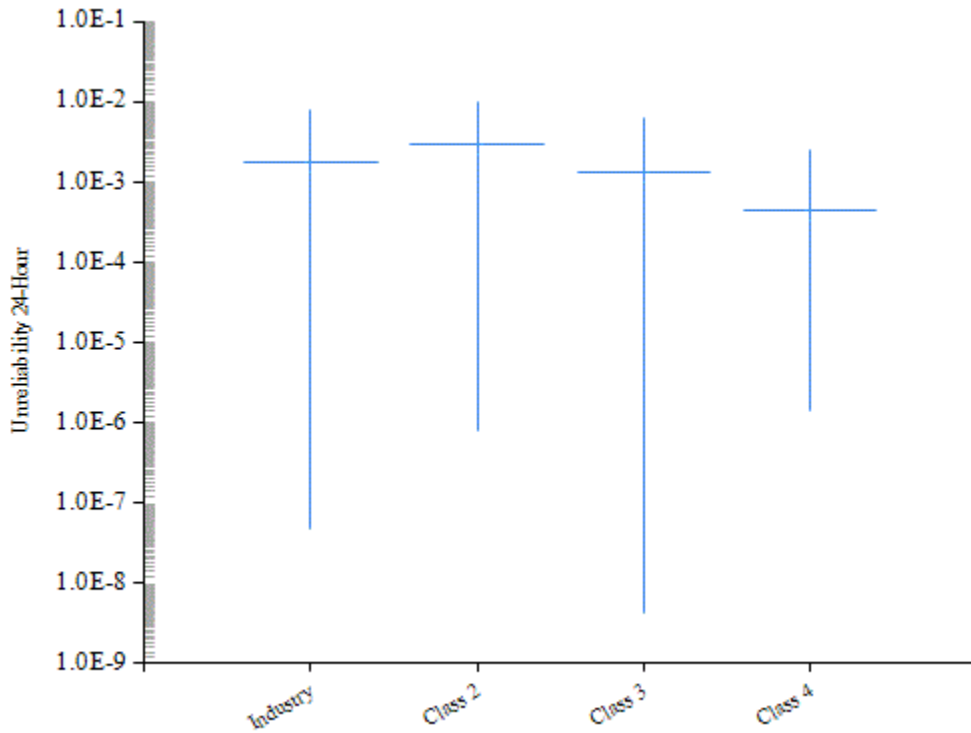


Figure 2. EPS 24-hour mission unreliability for Class 2, 3, and 4 and industry-wide groupings.

4. INDUSTRY-WIDE TRENDS

The yearly failure and demand or run-time data from 1998 to 2024 were obtained from IRIS for the EPS system. EPS train maintenance unavailability data for trending are from the same period, as reported in the ROP program and IRIS. The component basic event uncertainty was calculated for the EPS system components using the trending methods described in Sections 1 and 2 of Reference [6]. Table 6 and Table 7 show the yearly data values for each EPS-specific component and failure mode combination that was varied in the model. These data were loaded into the EPS system fault tree in each SPAR model (see Table 1).

The trend charts show the results of varying component reliability data over time and updating generic, relatively flat prior distributions (or constrained noninformative distributions; refer to Section 2 of Reference [6]) using data for each year. In addition, the calculated industry-wide system unreliability from this update (the “industry” values in Table 2) is shown as “SPAR/IRIS” in the charts for comparison. Section 4 of Reference [6] provides a more detailed discussion of the trending methods. The regression method is indicated in the lower left-hand corner of the trend figures.

The component and failure mode that was varied in the EPS model is EPS diesel generator start, run, and test and maintenance.

Figure 3 shows the trend in the EPS start-only unreliability. Table 4 shows the data points for Figure 3. **No statistically significant increasing or decreasing trends** were identified in the industry-wide estimates of **EPS system start-only unreliability** for the most recent 10-year period.

Figure 4 shows the trend in the 24-hour mission unreliability. Table 5 shows the data points for Figure 4. **A statistically significant decreasing trend** was identified in the industry-wide estimates of **EPS system 24-hour mission unreliability** for the most recent 10-year period.

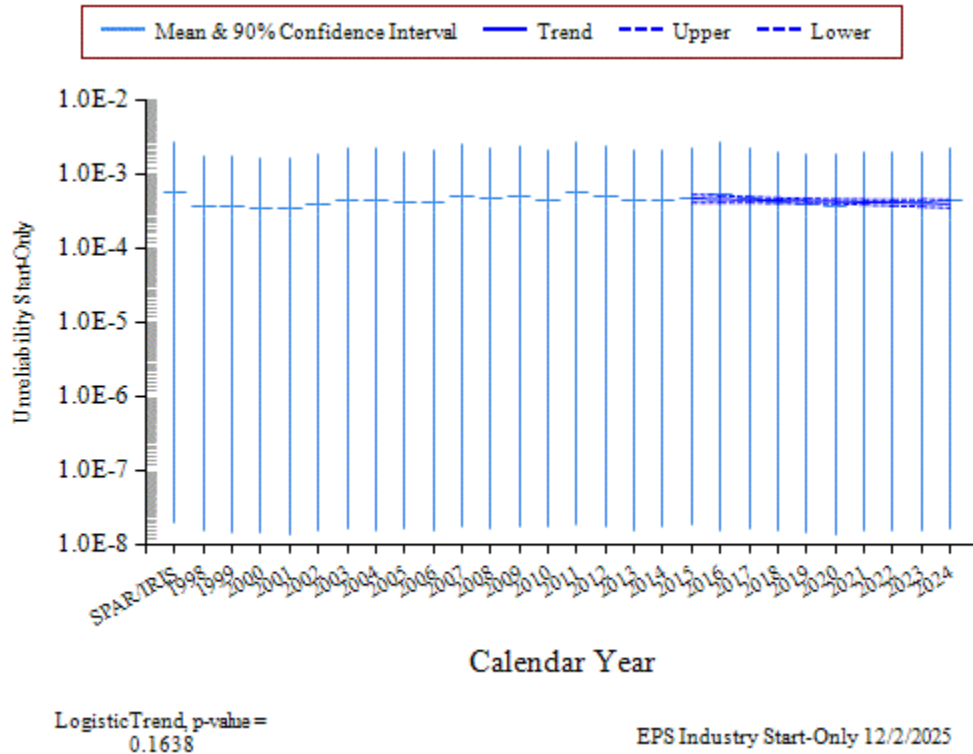


Figure 3. Trend of EPS system start-only unreliability.

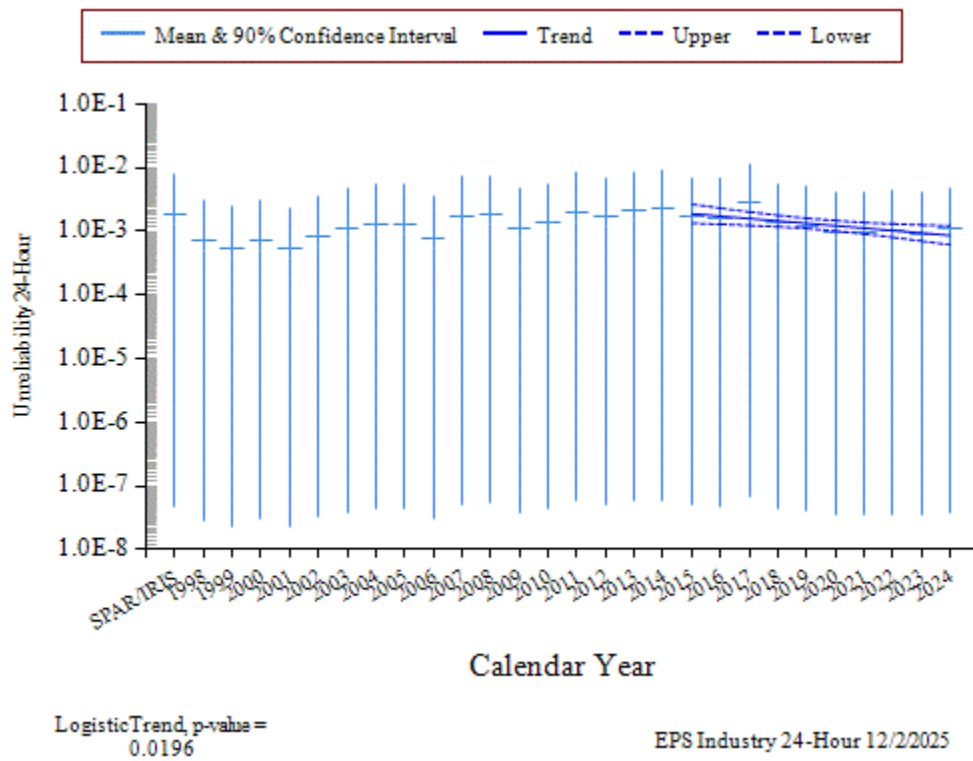


Figure 4. Trend of EPS system 24-hour mission unreliability.

5. BASIC EVENT GROUP IMPORTANCES

The EPS basic event group Fussell-Vesely importances were calculated for the failure to start and 24-hour mission models for each plant using the industry-wide data from the 2020 SPAR parameter update. These basic event group importances were then averaged across all plants to represent an industry-wide basic event group importance.

The industry-wide EPS start-only and 24-hour mission basic event group importances are shown in Figure 5. For both **start-only and 24-hour mission, the leading contributor to EPS system unreliability is the 1E Generator group of basic events followed by the Cooling and AC Power groups.**

For more discussion on the EPS diesel generators, see the emergency diesel generator component reliability study at the NRC Reactor Operational Experience Results and Databases web page (<https://nrc.nrel.gov/>). Table 3 shows the SPAR model EPS importance groups and their descriptions.

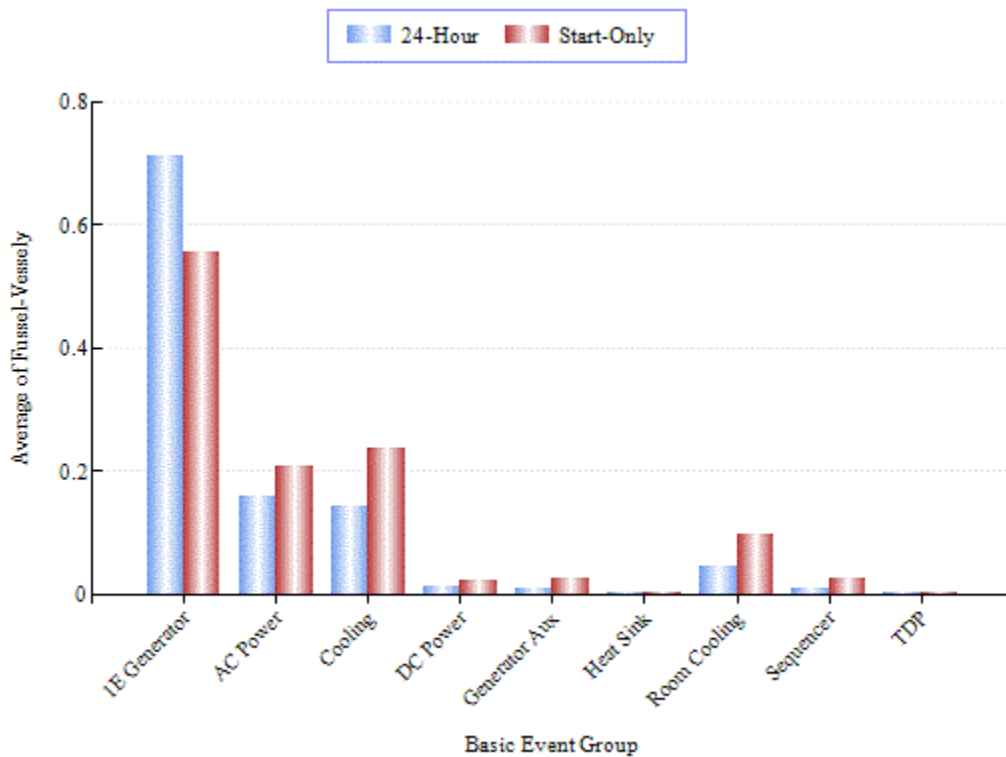


Figure 5. EPS industry-wide basic event group importances.

Table 3. EPS model basic event importance group descriptions.

Group	Description
1E Generator	All basic events associated with the primary emergency power supplies, including diesel, gas turbine, hydro-powered equipment, as well as the start, run, common-cause, and test and maintenance
AC Power	Buses and circuit breakers in the EPS model
Cooling	Cooling support components: service water or component cooling pumps, valves, and heat exchangers
DC Power	Buses, circuit breakers, battery chargers, and batteries in the EPS model
Generator Aux.	This group includes the emergency power auxiliary components that are explicitly modeled in the EPS system, including the fuel oil, starting air, room cooling, and electrical dedicated to the generators
Heat Sink	The pumps, valves, strainers, and other equipment associated with the ultimate heat sink
Room Cooling	All basic events associated with the diesel generator room cooling
Sequencer	The sequencer including all basic events associated with the sequencer
TDP	All basic events associated with the high-pressure injection turbine-driven pump (TDP) that are needed in order to align alternate power source such as combustion turbine generator

The basic event group importances were also averaged across plants of the same EPS class to represent basic event group importances for different EPS classes. The EPS class-specific start-only and 24-hour mission basic event group importances are shown in Figure 6–Figure 8. For all classes, the leading contributor to EPS system unreliability is the 1E Generator group of basic events for both the start-only and 24-hour mission cases.

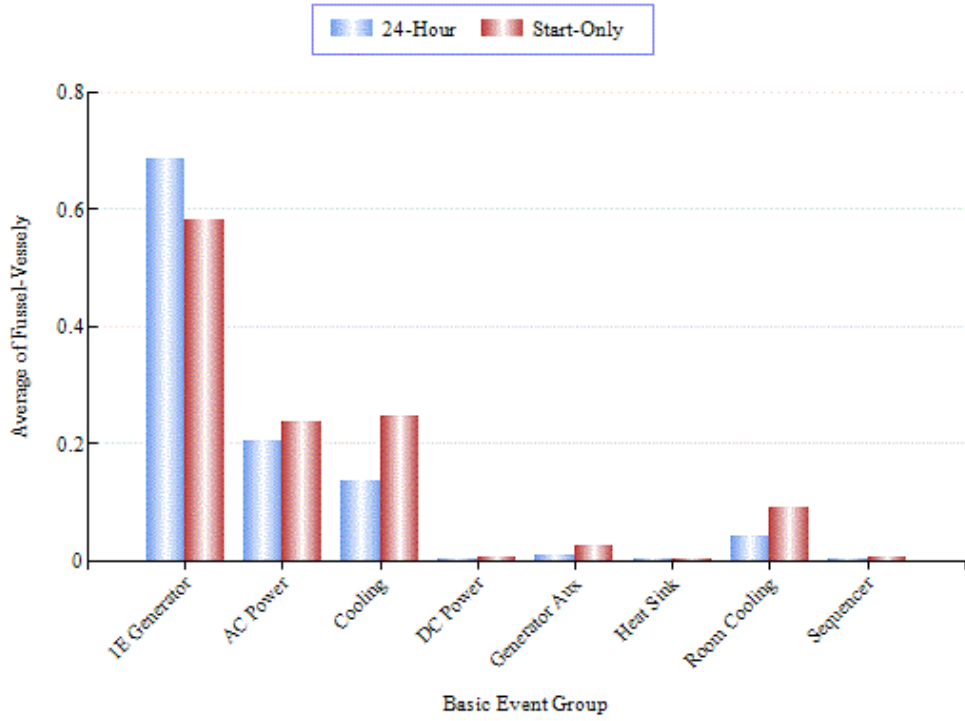


Figure 6. EPS Class 2 basic event group importances.

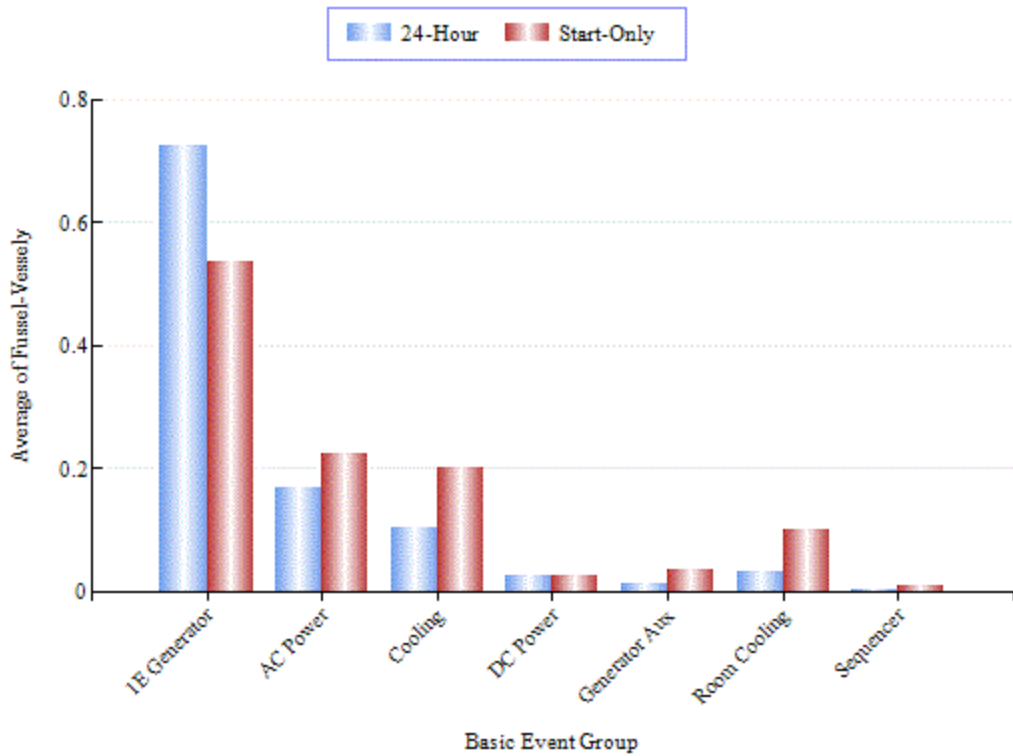


Figure 7. EPS Class 3 basic event group importances.

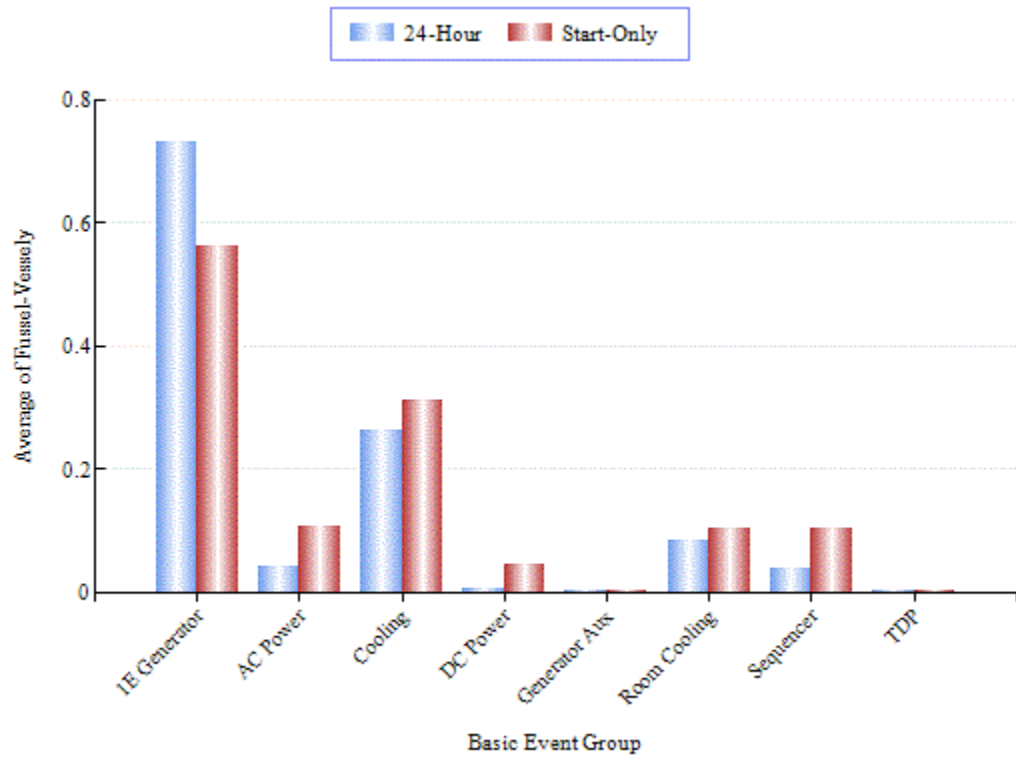


Figure 8. EPS Class 4 basic event group importances.

6. DATA TABLES

Table 4. Plot data for Figure 3, EPS start-only unreliability trend.

Year/Source	Regression Curve Data Points			Annual Estimate Data Points		
	Lower (5%)	Mean	Upper (95%)	Lower (5%)	Mean	Upper (95%)
SPAR/IRIS	—	—	—	2.04E-08	5.74E-04	2.74E-03
1998	—	—	—	1.54E-08	3.67E-04	1.76E-03
1999	—	—	—	1.49E-08	3.63E-04	1.74E-03
2000	—	—	—	1.46E-08	3.39E-04	1.61E-03
2001	—	—	—	1.44E-08	3.48E-04	1.68E-03
2002	—	—	—	1.55E-08	3.90E-04	1.87E-03
2003	—	—	—	1.70E-08	4.55E-04	2.21E-03
2004	—	—	—	1.61E-08	4.55E-04	2.25E-03
2005	—	—	—	1.69E-08	4.18E-04	1.99E-03
2006	—	—	—	1.58E-08	4.28E-04	2.09E-03
2007	—	—	—	1.79E-08	5.05E-04	2.47E-03
2008	—	—	—	1.72E-08	4.64E-04	2.24E-03
2009	—	—	—	1.85E-08	5.02E-04	2.42E-03
2010	—	—	—	1.79E-08	4.50E-04	2.13E-03
2011	—	—	—	1.97E-08	5.51E-04	2.67E-03
2012	—	—	—	1.84E-08	4.93E-04	2.37E-03
2013	—	—	—	1.62E-08	4.34E-04	2.11E-03
2014	—	—	—	1.74E-08	4.46E-04	2.12E-03
2015	4.12E-04	4.69E-04	5.34E-04	1.86E-08	4.72E-04	2.24E-03
2016	4.13E-04	4.61E-04	5.15E-04	1.56E-08	5.49E-04	2.74E-03
2017	4.13E-04	4.53E-04	4.97E-04	1.68E-08	4.67E-04	2.28E-03
2018	4.12E-04	4.45E-04	4.82E-04	1.62E-08	4.09E-04	1.95E-03
2019	4.08E-04	4.38E-04	4.70E-04	1.51E-08	3.90E-04	1.89E-03
2020	4.01E-04	4.30E-04	4.62E-04	1.43E-08	3.80E-04	1.87E-03
2021	3.91E-04	4.23E-04	4.57E-04	1.63E-08	4.14E-04	1.99E-03
2022	3.79E-04	4.15E-04	4.56E-04	1.62E-08	4.14E-04	1.98E-03
2023	3.66E-04	4.08E-04	4.56E-04	1.63E-08	4.13E-04	1.98E-03
2024	3.52E-04	4.01E-04	4.57E-04	1.65E-08	4.56E-04	2.23E-03

Table 5. Plot data for Figure 4, EPS 24-hour mission unreliability trend.

Year/Source	Regression Curve Data Points			Annual Estimate Data Points		
	Lower (5%)	Mean	Upper (95%)	Lower (5%)	Mean	Upper (95%)
SPAR/IRIS	—	—	—	4.76E-08	1.79E-03	7.83E-03
1998	—	—	—	2.84E-08	6.94E-04	2.97E-03
1999	—	—	—	2.33E-08	5.46E-04	2.39E-03
2000	—	—	—	2.99E-08	7.26E-04	3.05E-03
2001	—	—	—	2.28E-08	5.33E-04	2.35E-03
2002	—	—	—	3.17E-08	8.13E-04	3.46E-03
2003	—	—	—	3.89E-08	1.12E-03	4.75E-03
2004	—	—	—	4.28E-08	1.31E-03	5.52E-03
2005	—	—	—	4.38E-08	1.28E-03	5.25E-03
2006	—	—	—	2.95E-08	7.74E-04	3.40E-03
2007	—	—	—	5.08E-08	1.71E-03	7.08E-03
2008	—	—	—	5.45E-08	1.85E-03	7.51E-03
2009	—	—	—	3.78E-08	1.09E-03	4.67E-03
2010	—	—	—	4.47E-08	1.35E-03	5.54E-03
2011	—	—	—	5.69E-08	2.01E-03	8.21E-03
2012	—	—	—	5.06E-08	1.69E-03	6.98E-03
2013	—	—	—	5.82E-08	2.10E-03	8.49E-03
2014	—	—	—	6.04E-08	2.29E-03	9.18E-03
2015	1.34E-03	1.89E-03	2.65E-03	5.12E-08	1.69E-03	6.91E-03
2016	1.29E-03	1.73E-03	2.31E-03	4.64E-08	1.60E-03	6.90E-03
2017	1.24E-03	1.59E-03	2.02E-03	6.97E-08	2.92E-03	1.16E-02
2018	1.18E-03	1.45E-03	1.79E-03	4.53E-08	1.36E-03	5.63E-03
2019	1.11E-03	1.33E-03	1.61E-03	4.13E-08	1.20E-03	5.02E-03
2020	1.01E-03	1.22E-03	1.47E-03	3.42E-08	9.30E-04	3.99E-03
2021	9.11E-04	1.12E-03	1.38E-03	3.42E-08	9.27E-04	3.97E-03
2022	8.06E-04	1.03E-03	1.31E-03	3.63E-08	1.00E-03	4.24E-03
2023	7.06E-04	9.43E-04	1.26E-03	3.41E-08	9.22E-04	3.95E-03
2024	6.14E-04	8.65E-04	1.22E-03	3.83E-08	1.12E-03	4.81E-03

Table 6. Basic event reliability trending data.

Failure Mode	Component	Year	Number of Failures	Demands/ Run Hours	Bayesian Update			
					Mean	Post A	Post B	Distribution
FTLR	GEN	1998	14	4,096	3.39E-03	17.61	5.17E+03	Beta
FTLR	GEN	1999	5	4,040	1.68E-03	8.61	5.13E+03	Beta
FTLR	GEN	2000	8	4,141	2.22E-03	11.61	5.22E+03	Beta
FTLR	GEN	2001	13	4,173	3.15E-03	16.61	5.25E+03	Beta
FTLR	GEN	2002	14	3,930	3.51E-03	17.61	5.01E+03	Beta
FTLR	GEN	2003	15	3,876	3.74E-03	18.61	4.95E+03	Beta
FTLR	GEN	2004	10	3,821	2.77E-03	13.61	4.90E+03	Beta
FTLR	GEN	2005	15	3,784	3.82E-03	18.61	4.86E+03	Beta
FTLR	GEN	2006	15	3,756	3.84E-03	18.61	4.83E+03	Beta
FTLR	GEN	2007	21	3,642	5.20E-03	24.61	4.71E+03	Beta
FTLR	GEN	2008	16	3,718	4.08E-03	19.61	4.79E+03	Beta
FTLR	GEN	2009	18	3,673	4.53E-03	21.61	4.75E+03	Beta
FTLR	GEN	2010	11	3,625	3.10E-03	14.61	4.70E+03	Beta
FTLR	GEN	2011	16	3,659	4.13E-03	19.61	4.73E+03	Beta
FTLR	GEN	2012	17	3,509	4.48E-03	20.61	4.58E+03	Beta
FTLR	GEN	2013	12	3,525	3.38E-03	15.61	4.60E+03	Beta
FTLR	GEN	2014	12	3,543	3.37E-03	15.61	4.62E+03	Beta
FTLR	GEN	2015	13	3,501	3.62E-03	16.61	4.58E+03	Beta
FTLR	GEN	2016	11	3,494	3.18E-03	14.61	4.57E+03	Beta
FTLR	GEN	2017	9	3,451	2.77E-03	12.61	4.53E+03	Beta
FTLR	GEN	2018	14	3,483	3.85E-03	17.61	4.56E+03	Beta
FTLR	GEN	2019	7	3,419	2.35E-03	10.61	4.50E+03	Beta
FTLR	GEN	2020	4	3,407	1.69E-03	7.61	4.49E+03	Beta
FTLR	GEN	2021	5	3,350	1.94E-03	8.61	4.43E+03	Beta
FTLR	GEN	2022	10	3,371	3.05E-03	13.61	4.45E+03	Beta
FTLR	GEN	2023	6	3,293	2.19E-03	9.61	4.38E+03	Beta
FTLR	GEN	2024	9	3,325	2.85E-03	12.61	4.41E+03	Beta
FTR	GEN	1998	4	11,291	5.38E-04	7.83	1.45E+04	Gamma
FTR	GEN	1999	1	11,692	3.23E-04	4.83	1.49E+04	Gamma
FTR	GEN	2000	7	13,608	6.42E-04	10.83	1.69E+04	Gamma
FTR	GEN	2001	2	14,166	3.35E-04	5.83	1.74E+04	Gamma
FTR	GEN	2002	7	13,238	6.57E-04	10.83	1.65E+04	Gamma
FTR	GEN	2003	10	11,931	9.11E-04	13.83	1.52E+04	Gamma
FTR	GEN	2004	13	11,733	1.12E-03	16.83	1.50E+04	Gamma
FTR	GEN	2005	14	12,293	1.15E-03	17.83	1.55E+04	Gamma
FTR	GEN	2006	4	11,365	5.36E-04	7.83	1.46E+04	Gamma
FTR	GEN	2007	17	11,458	1.42E-03	20.83	1.47E+04	Gamma
FTR	GEN	2008	20	11,616	1.60E-03	23.83	1.49E+04	Gamma
FTR	GEN	2009	8	11,637	7.95E-04	11.83	1.49E+04	Gamma

Table 6. (continued).

Failure Mode	Component	Year	Number of Failures	Demands/Run Hours	Bayesian Update			
					Mean	Post A	Post B	Distribution
FTR	GEN	2010	13	11,299	1.16E-03	16.83	1.45E+04	Gamma
FTR	GEN	2011	21	12,332	1.59E-03	24.83	1.56E+04	Gamma
FTR	GEN	2012	11	7,352	1.40E-03	14.83	1.06E+04	Gamma
FTR	GEN	2013	17	7,913	1.87E-03	20.83	1.12E+04	Gamma
FTR	GEN	2014	17	7,228	1.99E-03	20.83	1.05E+04	Gamma
FTR	GEN	2015	12	7,783	1.43E-03	15.83	1.10E+04	Gamma
FTR	GEN	2016	10	7,593	1.28E-03	13.83	1.08E+04	Gamma
FTR	GEN	2017	22	7,402	2.42E-03	25.83	1.07E+04	Gamma
FTR	GEN	2018	10	7,875	1.24E-03	13.83	1.11E+04	Gamma
FTR	GEN	2019	8	7,392	1.11E-03	11.83	1.06E+04	Gamma
FTR	GEN	2020	5	7,414	8.28E-04	8.83	1.07E+04	Gamma
FTR	GEN	2021	4	7,193	7.50E-04	7.83	1.04E+04	Gamma
FTR	GEN	2022	5	7,327	8.35E-04	8.83	1.06E+04	Gamma
FTR	GEN	2023	4	7,258	7.45E-04	7.83	1.05E+04	Gamma
FTR	GEN	2024	6	7,589	9.07E-04	9.83	1.08E+04	Gamma
FTS	GEN	1998	18	4,773	2.70E-03	41.8	1.55E+04	Beta
FTS	GEN	1999	8	4,634	2.07E-03	31.8	1.53E+04	Beta
FTS	GEN	2000	12	4,565	2.34E-03	35.8	1.53E+04	Beta
FTS	GEN	2001	12	4,571	2.34E-03	35.8	1.53E+04	Beta
FTS	GEN	2002	10	4,667	2.20E-03	33.8	1.54E+04	Beta
FTS	GEN	2003	17	4,422	2.69E-03	40.8	1.51E+04	Beta
FTS	GEN	2004	14	4,328	2.51E-03	37.8	1.50E+04	Beta
FTS	GEN	2005	16	4,374	2.64E-03	39.8	1.51E+04	Beta
FTS	GEN	2006	9	4,361	2.17E-03	32.8	1.51E+04	Beta
FTS	GEN	2007	11	4,277	2.32E-03	34.8	1.50E+04	Beta
FTS	GEN	2008	8	4,318	2.11E-03	31.8	1.50E+04	Beta
FTS	GEN	2009	15	4,227	2.60E-03	38.8	1.49E+04	Beta
FTS	GEN	2010	15	4,142	2.61E-03	38.8	1.48E+04	Beta
FTS	GEN	2011	19	4,178	2.87E-03	42.8	1.49E+04	Beta
FTS	GEN	2012	14	3,972	2.57E-03	37.8	1.47E+04	Beta
FTS	GEN	2013	6	4,049	2.02E-03	29.8	1.47E+04	Beta
FTS	GEN	2014	12	4,019	2.43E-03	35.8	1.47E+04	Beta
FTS	GEN	2015	13	3,994	2.50E-03	36.8	1.47E+04	Beta
FTS	GEN	2016	13	4,011	2.50E-03	36.8	1.47E+04	Beta
FTS	GEN	2017	10	3,959	2.30E-03	33.8	1.46E+04	Beta
FTS	GEN	2018	7	3,964	2.10E-03	30.8	1.47E+04	Beta
FTS	GEN	2019	4	3,973	1.89E-03	27.8	1.47E+04	Beta
FTS	GEN	2020	4	3,941	1.90E-03	27.8	1.46E+04	Beta
FTS	GEN	2021	12	3,859	2.45E-03	35.8	1.45E+04	Beta
FTS	GEN	2022	4	3,869	1.90E-03	27.8	1.46E+04	Beta
FTS	GEN	2023	10	3,796	2.33E-03	33.8	1.45E+04	Beta

Table 6. (continued).

Failure Mode	Component	Year	Number of Failures	Demands/Run Hours	Bayesian Update			
					Mean	Post A	Post B	Distribution
FTS	GEN	2024	8	3,828	2.19E-03	31.8	1.45E+04	Beta

Table 7. Basic event unavailability (UA) trending data.

Failure Mode	Component	Year	UA Hours	Critical Hours	Bayesian Update			
					Mean	Post A	Post B	Distribution
UA	EDG	1998	21,234.84	1,874,166	1.04E-02	2.12	2.01E+02	Beta
UA	EDG	1999	22,769.04	2,005,223	1.10E-02	2.51	2.26E+02	Beta
UA	EDG	2000	18,408.57	2,042,467	9.53E-03	2.59	2.69E+02	Beta
UA	EDG	2001	19,233.33	2,075,373	9.72E-03	1.83	1.86E+02	Beta
UA	EDG	2002	24,631.27	2,093,196	1.20E-02	2.13	1.75E+02	Beta
UA	EDG	2003	28,961.45	2,047,203	1.39E-02	1.65	1.17E+02	Beta
UA	EDG	2004	29,616.96	2,099,392	1.36E-02	1.29	9.36E+01	Beta
UA	EDG	2005	26,349.64	2,070,016	1.29E-02	2.36	1.80E+02	Beta
UA	EDG	2006	28,713.17	2,083,212	1.33E-02	1.59	1.19E+02	Beta
UA	EDG	2007	34,106.33	2,104,115	1.62E-02	1.74	1.06E+02	Beta
UA	EDG	2008	31,754.78	2,089,978	1.52E-02	2.09	1.36E+02	Beta
UA	EDG	2009	33,203.71	2,059,429	1.61E-02	1.98	1.22E+02	Beta
UA	EDG	2010	30,037.07	2,081,690	1.44E-02	2.5	1.71E+02	Beta
UA	EDG	2011	36,400.60	2,023,479	1.75E-02	1.9	1.07E+02	Beta
UA	EDG	2012	32,469.83	1,977,596	1.59E-02	2.1	1.30E+02	Beta
UA	EDG	2013	30,642.43	2,007,371	1.39E-02	1.88	1.33E+02	Beta
UA	EDG	2014	28,291.92	2,027,147	1.43E-02	2.39	1.65E+02	Beta
UA	EDG	2015	30,706.38	2,008,809	1.54E-02	2.56	1.64E+02	Beta
UA	EDG	2016	29,859.10	2,025,233	1.51E-02	0.72	4.68E+01	Beta
UA	EDG	2017	30,465.40	1,997,343	1.47E-02	1.64	1.10E+02	Beta
UA	EDG	2018	25,798.44	1,990,438	1.30E-02	2.37	1.80E+02	Beta
UA	EDG	2019	24,498.41	1,975,944	1.22E-02	2	1.62E+02	Beta
UA	EDG	2020	21,822.02	1,887,082	1.14E-02	1.47	1.28E+02	Beta
UA	EDG	2021	24,031.15	1,824,673	1.28E-02	2.04	1.58E+02	Beta
UA	EDG	2022	23,838.89	1,807,766	1.35E-02	2.37	1.73E+02	Beta
UA	EDG	2023	24,253.15	1,802,893	1.29E-02	2.11	1.62E+02	Beta
UA	EDG	2024	25,772.19	1,772,656	1.44E-02	1.64	1.12E+02	Beta

Table 8. Failure mode acronyms.

Failure Mode	Failure Mode Description
FTLR	Fail to load/run
FTR	Fail to run
FTS	Fail to start
UA	Unavailability (maintenance or state of another component)

7. SYSTEM DESCRIPTION

The EPS is designed to provide backup, on-site AC power to vital buses given a LOOP until off-site power can be restored to the plant. EPS designs vary widely among the 93 U.S. commercial operating nuclear reactors. A summary of those designs is presented in Table 9. Typical EPS designs include two, three, or four EDGs, with only one of the EDGs required for success. However, as indicated in Table 9, there are many variations of these typical designs, including shared EDGs and/or the ability to cross-tie to other EDGs (at multi-unit sites), and availability of alternate AC sources such as gas turbine generators (GTGs) or hydro turbine generators (HTGs). In addition, several of the plants require two EDGs for long-term success, rather than one.

SPAR modeling of the EPS incorporates the plant-to-plant design and operational differences indicated in Table 9, which shows the generating equipment used in the EPS SPAR model. In some cases, two models (for sister units at the same site) use the same equipment. These are repeated for each entry to show how the SPAR models calculate. All AC emergency power sources that either are automatically started and aligned to essential buses given a LOOP or can be manually started and aligned within approximately 30 minutes are included in the EPS SPAR fault trees. Additional emergency power sources such as GTGs or HTGs that require more than 30 minutes to start and align to essential buses are included in other parts of the station blackout (SBO) event tree, typically as additional credit for recovery of AC power. Included in the EPS SPAR fault trees are dependencies such as room cooling, service water cooling, and DC power.

The typical EPS consists of two or more emergency power sources, usually diesel generators, connected to two or more vital or safety buses. These vital buses power equipment needed for safe shutdown during most transients that are postulated to occur at nuclear power plants.

Figure 9 shows the simplest EPS configuration. Other EPS configuration variations are more buses, usually with their own emergency power sources; swing power sources that can power vital buses at either of two units; and/or alternate emergency power sources typically referred to as SBO generators.

The SPAR models of the EPS include many more components than those shown in Figure 9. Most of the components are related to the support needed for the emergency power source success. Some are explicitly modeled in SPAR if there is a common-mode failure of multiple generators. Generally, these include:

- **Cooling:** Cooling is required to remove heat from the lubricating oil and the engine itself. Cooling is provided by service water either directly or through a closed loop cooling system such as component cooling water. Some emergency power sources have dedicated cooling systems that are independent of the service water systems.
- **Room Cooling:** Room cooling is usually required for extended performance of the EPS. The room cooling is provided by air conditioning heat exchangers that may be cooled by a chilled water source.
- **Fuel Oil:** Fuel oil is usually provided from a common fuel oil tank to separate “day tanks” for each emergency power source. Pumps, valves, and instrumentation are required to maintain day tank levels and supply fuel oil to the engine itself.
- **Sequencer:** The sequencer strips load from the dead bus prior to attempting to load the bus with the emergency power source. Then the sequencer sequences load back onto the bus once it has been re-energized.
- **DC Power:** DC power is provided by the vital batteries. DC power provides the energy to operate breakers and powers the control circuitry for the EPS.

Table 9. EPS configurations at U.S. commercial operating nuclear reactors.

Class	Plant	Total Generators	1E Generator	1E X-tie (To Sister Unit)	Non-1E Generator
Class 2	Beaver Valley 1	4	2	2	—
Class 2	Beaver Valley 2	4	2	2	—
Class 2	Brunswick 1	4	2	2	—
Class 2	Brunswick 2	4	2	2	—
Class 2	Callaway	2	2	—	—
Class 2	Clinton 1	2	2	—	—
Class 2	Columbia 2	2	2	—	—
Class 2	Comanche Peak 1	2	2	—	—
Class 2	Comanche Peak 2	2	2	—	—
Class 2	Cook 1	2	2	—	—
Class 2	Cook 2	2	2	—	—
Class 2	Cooper	2	2	—	—
Class 2	Davis-Besse	2	2	—	—
Class 2	Ginna	2	2	—	—
Class 2	Grand Gulf	2	2	—	—
Class 2	Harris	2	2	—	—
Class 2	McGuire 1	2	2	—	—
Class 2	McGuire 2	2	2	—	—
Class 2	Monticello	2	2	—	—
Class 2	Nine Mile Pt. 1	2	2	—	—
Class 2	Nine Mile Pt. 2	2	2	—	—
Class 2	Oconee 1	2	1	1	—
Class 2	Oconee 2	2	1	1	—
Class 2	Oconee 3	2	1	1	—
Class 2	Palisades	2	2	—	—
Class 2	Perry	2	2	—	—
Class 2	Robinson 2	3	2	—	1
Class 2	Seabrook	2	2	—	—
Class 2	Summer	2	2	—	—
Class 2	Waterford 3	2	2	—	—
Class 2	Wolf Creek	2	2	—	—
Class 3	Arkansas 1	3	2	—	1
Class 3	Arkansas 2	3	2	—	1
Class 3	Braidwood 1	4	2	2	—
Class 3	Braidwood 2	4	2	2	—

Table 9. (continued).

Class	Plant	Total Generators	1E Generator	1E X-tie (To Sister Unit)	Non-1E Generator
Class 3	Byron 1	4	2	2	—
Class 3	Byron 2	4	2	2	—
Class 3	Calvert Cliffs 1	5	2	2	1
Class 3	Calvert Cliffs 2	5	2	2	1
Class 3	Catawba 1	4	2	2	—
Class 3	Catawba 2	4	2	2	—
Class 3	Diablo Canyon 1	3	3	—	—
Class 3	Diablo Canyon 2	3	3	—	—
Class 3	Farley 1	5	3	2	—
Class 3	Farley 2	5	3	2	—
Class 3	Hatch 1	5	3	2	—
Class 3	Hatch 2	5	3	2	—
Class 3	Hope Creek	4	4	—	—
Class 3	La Salle 1	4	2	2	—
Class 3	La Salle 2	4	2	2	—
Class 3	Millstone 2	3	2	—	1
Class 3	Millstone 3	3	2	—	1
Class 3	Palo Verde 1	8	2	4 (not included in SPAR model)	2 (need both)
Class 3	Palo Verde 2	8	2	4 (not included in SPAR model)	2 (need both)
Class 3	Palo Verde 3	8	2	4 (not included in SPAR model)	2 (need both)
Class 3	Peach Bottom 2	4	4 (2 of 4 required)	—	—
Class 3	Peach Bottom 3	4	4 (2 of 4 required)	—	—
Class 3	River Bend	4	3 (“C” EDG is different)	—	1
Class 3	Salem 1	4	3	—	1
Class 3	Salem 2	4	3	—	1
Class 3	Sequoyah 1	4	2	2	—
Class 3	Sequoyah 2	4	2	2	—
Class 3	South Texas 1	3	3	—	—
Class 3	South Texas 2	3	3	—	—
Class 3	St. Lucie 1	4	2	2	—
Class 3	St. Lucie 2	4	2	2	—
Class 3	Surry 1	4	3	—	1

Table 9. (continued).

Class	Plant	Total Generators	1E Generator	1E X-tie (To Sister Unit)	Non-1E Generator
Class 3	Surry 2	4	3	—	1
Class 3	Susquehanna 1	5	5 (2 of the EDGs cannot support all loads)	—	—
Class 3	Susquehanna 2	5	5 (2 of the EDGs cannot support all loads)	—	—
Class 3	Turkey Point 3	4	2	2	—
Class 3	Turkey Point 4	4	2	2	—
Class 3	Vogtle 1	3	2	1	—
Class 3	Vogtle 2	3	2	1	—
Class 3	Watts Bar 1	4	2	2	—
Class 3	Watts Bar 2	4	2	2	—
Class 4	Browns Ferry 1	8	4	4	—
Class 4	Browns Ferry 2	6	4	2	—
Class 4	Browns Ferry 3	8	4	4	—
Class 4	Dresden 2	5	2	1	2
Class 4	Dresden 3	5	2	1	2
Class 4	Fermi 2	9	4	—	5
Class 4	FitzPatrick	4	4	—	—
Class 4	Limerick 1	6	4	2	—
Class 4	Limerick 2	6	4	2	—
Class 4	North Anna 1	5	2	2	1
Class 4	North Anna 2	5	2	2	1
Class 4	Point Beach 1	5	4	—	1
Class 4	Point Beach 2	5	4	—	1
Class 4	Prairie Island 1	4	2	2	—
Class 4	Prairie Island 2	4	2	2	—
Class 4	Quad Cities 1	5	1	2	2
Class 4	Quad Cities 2	5	1	2	2

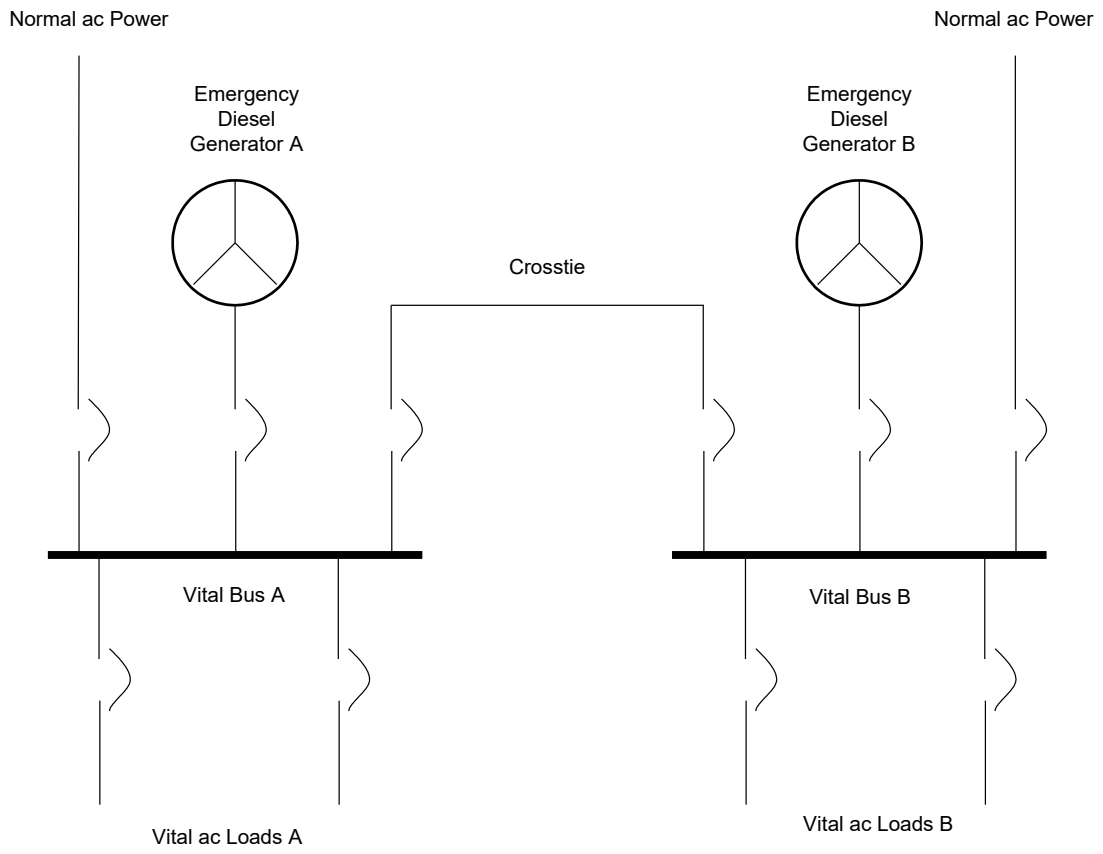


Figure 9. Simplified EPS system schematic.

8. REFERENCES

1. Z. Ma, T. E. Wierman, and K. J. Kvarfordt. 2021. “Industry-Average Performance for Components and Initiating Events at U.S. Commercial Nuclear Power Plants: 2020 Update,” INL/EXT-21-65055, Idaho National Laboratory. <https://nrcoe.inl.gov/publicdocs/AvgPerf/AvgPara2020.pdf>.
2. S. A. Eide, T. E. Wierman, C. D. Gentillon, D. M. Rasmuson, and C. L. Atwood. 2007. “Industry-Average Performance for Components and Initiating Events at U.S. Commercial Nuclear Power Plants,” NUREG/CR-6928, U.S. Nuclear Regulatory Commission. <https://www.nrc.gov/docs/ML0706/ML070650650.pdf>.
3. Z. Ma and K. J. Kvarfordt. 2022. “CCF Parameter Estimations, 2020 Update,” INL/EXT-21-62940, Revision 1, Idaho National Laboratory. <https://nrcoe.inl.gov/publicdocs/CCF/ccfparamest2020rev1.pdf>.
4. Z. Ma, K. J. Kvarfordt, and T. Wierman. 2023. “System Study: Emergency Power System 1998–2022,” INL/RPT-24-77012, Idaho National Laboratory. <https://nrcoe.inl.gov/publicdocs/SystemStudies/eps-2022.pdf>.
5. United States Nuclear Regulatory Commission. 2010. “Component Reliability Data Sheets Update 2010,” online. Available: <https://nrcoe.inl.gov/publicdocs/AvgPerf/ComponentReliabilityDataSheets2010.pdf>.
6. C. D. Gentillon. 2016. “Overview and Reference Document for Operational Experience Results and Databases Trending,” online. Available: <https://nrcoe.inl.gov/publicdocs/Overview-and-Reference.pdf>.
7. Ma, Z, T. Liu, N. Johnson, and J.W. Merickle. 2025. “Enhanced Component Performance Study: Emergency Diesel Generators 1998–2024,” INL/RPT-25-86864, Idaho National Laboratory. <https://nrcoe.inl.gov/publicdocs/CompPerf/edg-2024.pdf>.
8. United States Nuclear Regulatory Commission. 2015. “Component Reliability Data Sheets Update 2015,” online. Available: <https://nrcoe.inl.gov/publicdocs/AvgPerf/ComponentReliabilityDataSheets2015.pdf>.