

Isolation Condenser

1998–2010

1 INTRODUCTION

This report presents an unreliability evaluation of the isolation condenser (ISO) system at 4 U.S. commercial boiling water reactors (BWRs) listed in Table 1. For each plant the corresponding Standardized Plant Analysis Risk (SPAR) model (version model indicated in Table 1) was used in the yearly calculations. Demand, run hours, and failure data from fiscal year (FY) 1998 through FY 2010 for selected components in the ISO were obtained from the Equipment Performance and Information Exchange (EPIX) database. Train unavailability data (outages from test or maintenance) were obtained from the Reactor Oversight Process (ROP) Safety System Unavailability (SSU) database (FY 1998–FY 2001) and the Mitigating Systems Performance Index (MSPI) database (FY 2002–FY 2010). Common-cause failure (CCF) data used in the models are from the 2005 update to the CCF database.

This report does not attempt to estimate basic event values for use in a probabilistic risk assessment (PRA). Suggested values for such use are presented in the report, *Industry-Average Performance for Components and Initiating Events at U.S. Commercial Nuclear Power Plants*, [NUREG/CR-6928](#) (Reference 1). Baseline ISO unreliability results using basic event values from that report are summarized in Section 3. Trend results for ISO (using system-specific data) are presented in Section 4. Similar to previous system study updates, Section 5 contains importance information (using the baseline results from Section 3), and Section 7 describes the ISO.

Table 1. BWR plants with an ISO system selected for the study.

Plant	Version
Dresden 2	3.31
Dresden 3	3.31
Nine Mile Pt. 1	3.21
Oyster Creek	3.31

The ISO model is evaluated using the station blackout (SBO) flag set in the SPAR model. The SBO flag set assumes no support systems or normal sources of makeup water are available and that the ISO system is required to perform to mitigate the effects of the SBO initiating event. All models include failures due to unavailability while in test or maintenance. Human error has not been included in the SPAR model logic. An overview of the trending methods, glossary of terms, and abbreviations can be found in the [Overview and Reference](#) document on the Reactor Operational Experience Results and Databases web page.

One mode of the models for the ISO system is calculated. The fail to operate (FTO) model includes the initial opening of the condensate return valve and make-up capabilities to continue to operate for 8 hours.

2 SUMMARY OF FINDINGS

The results of this ISO system unreliability study are summarized in this section. Of particular interest is the existence of any statistically significant¹ increasing trends. In this update, no statistically significant increasing trends were identified in the ISO unreliability trend results. In addition, this update identified no statistically significant decreasing trends in the ISO results.

The industry-wide ISO 8-hour basic event group importance was evaluated and is shown in Figure 2. The leading contributor to ISO system unreliability is failure of the alternate source (only source of makeup water during a SBO), followed by recovery, the condenser, a dependency on the EPS, and the ISO valves.

3 INDUSTRY-WIDE UNRELIABILITY

The ISO fault trees from the SPAR models were evaluated for each of the 4 operating U.S. commercial boiling water nuclear power plants with an ISO system.

The industry-wide unreliability of the ISO system has been estimated for one mode of operation, fail-to-operate-and-makeup. The uncertainty distributions for ISO show both plant design variability and parameter uncertainty from the industry-wide component failure data (1998–2002)².

Table 2 shows the percentiles and mean of the aggregated sample data (Latin hypercube, 1000 samples for each model) collected from the uncertainty calculations of the ISO fault trees in the SPAR models. The lower and upper bounds are based directly on the samples (Latin hypercube) from the uncertainty calculations in the SPAR models. For the industry-level results, the SPAR samples were combined into one large sample in order to determine the industry-level bounds, mean, and median.

Table 2. Industry-wide unreliability values.

Model	Lower (5%)	Median	Mean	Upper (95%)
Operate and makeup	2.22E-03	2.64E-02	4.47E-02	1.32E-01

4 INDUSTRY-WIDE TRENDS

The yearly (FY 1998–FY 2010) failure and demand or run time data were obtained from EPIX for the ISO system. The component basic event uncertainty was calculated for the ISO system components using the trending methods described in Section 1 and 2 of the [Overview and Reference](#) document. Table 5 shows the yearly data values for each ISO system specific component and failure mode combination that was varied in the model. These data were loaded into the ISO system fault tree in each SPAR model with an ISO system (see Table 1).

¹ Statistically significant is defined in terms of the ‘p-value.’ A p-value is a probability indicating whether to accept or reject the null hypothesis that there is no trend in the data. P-values of less than or equal to 0.05 indicate that we are 95% confident that there is a trend in the data (reject the null hypothesis of no trend.) By convention, we use the "Michelin Guide" scale: p-value < 0.05 (statistically significant), p-value < 0.01 (highly statistically significant); p-value < 0.001 (extremely statistically significant).

² By using industry-wide component failure data, individual plant performance is not included in the distribution of results.

The trend charts show the results of varying component reliability data over time and updating generic, relatively-flat prior distributions using data for each year. In addition, for comparison, the calculated industry-wide system reliability from this update (current SPAR/EPIX) is shown. Section 4 of the [Overview and Reference](#) link on the System Studies main web page provides more detailed discussion of the trending methods. In the lower left hand corner of the trend figures, the regression method is reported.

Figure 1 shows the trend in the system unreliability (operate and makeup). No statistically significant trend within the industry-wide estimates of ISO system unreliability (operate and makeup) on a per fiscal year basis was identified. Table 4 shows the data points for Figure 1.

The components that were varied in the ISO model are the ISO condensate MOV or AOV fail-to-open.

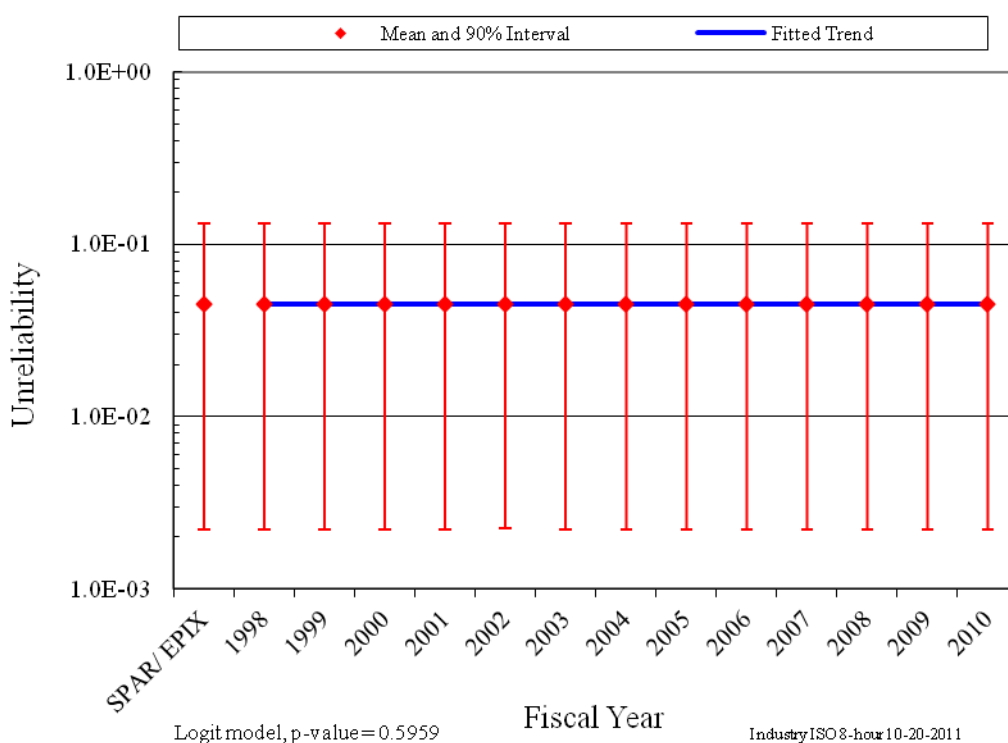


Figure 1. Trend of ISO system unreliability (operate and makeup), as a function of fiscal year.

5 BASIC EVENT GROUP IMPORTANCES

The ISO basic event group Fussell-Vesely importances were calculated for the operate and makeup mode for each plant using the industry-wide data (1998–2002). These basic event group importances were then averaged across all plants to represent an industry-wide basic event group importance. The industry-wide ISO operate and makeup basic event group importances are shown in Figure 2. The leading contributors to ISO system unreliability is recovery and failure of the alternate source (only source of makeup water during a SBO), followed by the condenser, a dependency on the EPS, and the ISO valves. For more discussion on the ISO valves, see the motor-operated and air-operated valve component reliability studies at [NRC Reactor Operational Experience Results and Databases](#). Table 3 shows the SPAR model ISO importance groups and their descriptions.

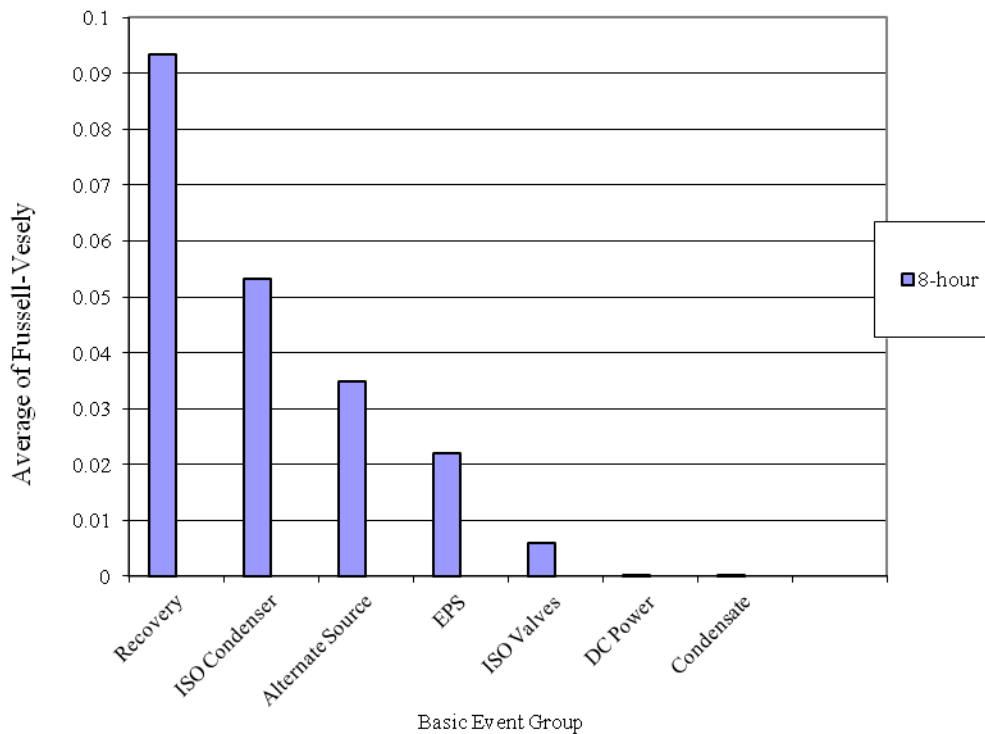


Figure 2. ISO basic event group importances.

Table 3. ISO model basic event importance group descriptions.

Group	Description
AC Power	The ac buses and circuit breakers that supply power to the makeup water source pumps and motor-operated valves if used.
Alternate Source	Alternate source of cooling water to the isolation condenser includes pumps and valves. The alternate source is the only source when the SBO flag set is used.
Condensate	Normal source of cooling water to the isolation condenser includes pumps and valves.
DC Power	The batteries and battery chargers that supply power to the ISO circuitry and valves.
EPS	Emergency power system dependency.
ISO Condenser	The isolation condenser heat exchanger.
ISO T&M	The Test and Maintenance unavailability of the isolation condenser.
ISO Valves	Air or motor-operated valves required for the isolation condenser function.
Recovery	Recovery from failure to actuate.

6 DATA TABLE

Table 4. Plot data for ISO operate and makeup trend, Figure 1.

FY/Source	Regression Curve Data Points			Plot Trend Error Bar Points		
	Mean	Lower (5%)	Upper (95%)	Lower (5%)	Upper (95%)	Mean
SPAR/ EPIX				2.22E-03	1.32E-01	4.47E-02
1998	4.47E-02	4.47E-02	4.47E-02	2.21E-03	1.32E-01	4.47E-02
1999	4.47E-02	4.47E-02	4.47E-02	2.21E-03	1.32E-01	4.47E-02
2000	4.47E-02	4.47E-02	4.47E-02	2.21E-03	1.32E-01	4.47E-02
2001	4.47E-02	4.47E-02	4.47E-02	2.21E-03	1.32E-01	4.47E-02
2002	4.47E-02	4.47E-02	4.47E-02	2.25E-03	1.32E-01	4.47E-02
2003	4.47E-02	4.47E-02	4.47E-02	2.21E-03	1.32E-01	4.47E-02
2004	4.47E-02	4.47E-02	4.47E-02	2.21E-03	1.32E-01	4.47E-02
2005	4.47E-02	4.47E-02	4.47E-02	2.21E-03	1.32E-01	4.47E-02
2006	4.47E-02	4.47E-02	4.47E-02	2.21E-03	1.32E-01	4.47E-02
2007	4.47E-02	4.47E-02	4.47E-02	2.21E-03	1.32E-01	4.47E-02
2008	4.47E-02	4.47E-02	4.47E-02	2.21E-03	1.32E-01	4.47E-02
2009	4.47E-02	4.47E-02	4.47E-02	2.21E-03	1.32E-01	4.47E-02
2010	4.47E-02	4.47E-02	4.47E-02	2.21E-03	1.32E-01	4.47E-02

Table 5. Basic event reliability trending data.

Failure Mode	Component	Year	Number of Failures	Demands/Run Hours	Bayesian Update			Distribution
					Mean	Post A	Post B	
FTOC	AOV	1998	0	156.5	1.01E-03	1	988.8	Beta
FTOC	AOV	1999	0	156.5	1.01E-03	1	988.8	Beta
FTOC	AOV	2000	0	158.5	1.01E-03	1	990.8	Beta
FTOC	AOV	2001	0	158.5	1.01E-03	1	990.8	Beta
FTOC	AOV	2002	0	151.4	1.02E-03	1	983.8	Beta
FTOC	AOV	2003	0	176.8	9.90E-04	1	1009.1	Beta
FTOC	AOV	2004	0	160.7	1.01E-03	1	993.1	Beta
FTOC	AOV	2005	0	170.2	9.96E-04	1	1002.6	Beta
FTOC	AOV	2006	0	150.5	1.02E-03	1	982.9	Beta
FTOC	AOV	2007	0	160.6	1.01E-03	1	992.9	Beta
FTOC	AOV	2008	0	159.6	1.01E-03	1	991.9	Beta
FTOC	AOV	2009	0	176.6	9.90E-04	1	1008.9	Beta
FTOC	AOV	2010	0	159.56	1.01E-03	1	992	Beta
FTOP	AOV	1998	0	87600	1.60E-06	0.3	187600	Gamma
FTOP	AOV	1999	0	87600	1.60E-06	0.3	187600	Gamma
FTOP	AOV	2000	0	87600	1.60E-06	0.3	187600	Gamma
FTOP	AOV	2001	0	87600	1.60E-06	0.3	187600	Gamma
FTOP	AOV	2002	1	87600	6.93E-06	1.3	187600	Gamma
FTOP	AOV	2003	0	87600	1.60E-06	0.3	187600	Gamma
FTOP	AOV	2004	0	87600	1.60E-06	0.3	187600	Gamma
FTOP	AOV	2005	0	87600	1.60E-06	0.3	187600	Gamma
FTOP	AOV	2006	0	87600	1.60E-06	0.3	187600	Gamma
FTOP	AOV	2007	0	87600	1.60E-06	0.3	187600	Gamma
FTOP	AOV	2008	0	87600	1.60E-06	0.3	187600	Gamma
FTOP	AOV	2009	0	87600	1.60E-06	0.3	187600	Gamma
FTOP	AOV	2010	0	87600	1.60E-06	0.3	187600	Gamma
SO	AOV	1998	0	87600	1.89E-07	0.3	1587600	Gamma
SO	AOV	1999	0	87600	1.89E-07	0.3	1587600	Gamma

Failure Mode	Component	Year	Number of Failures	Demands/Run Hours	Bayesian Update			Distribution
					Mean	Post A	Post B	
SO	AOV	2000	0	87600	1.89E-07	0.3	1587600	Gamma
SO	AOV	2001	0	87600	1.89E-07	0.3	1587600	Gamma
SO	AOV	2002	0	87600	1.89E-07	0.3	1587600	Gamma
SO	AOV	2003	0	87600	1.89E-07	0.3	1587600	Gamma
SO	AOV	2004	0	87600	1.89E-07	0.3	1587600	Gamma
SO	AOV	2005	0	87600	1.89E-07	0.3	1587600	Gamma
SO	AOV	2006	0	87600	1.89E-07	0.3	1587600	Gamma
SO	AOV	2007	0	87600	1.89E-07	0.3	1587600	Gamma
SO	AOV	2008	0	87600	1.89E-07	0.3	1587600	Gamma
SO	AOV	2009	0	87600	1.89E-07	0.3	1587600	Gamma
SO	AOV	2010	0	87600	1.89E-07	0.3	1587600	Gamma

Table 6. Failure mode acronyms.

Failure Mode	Failure Mode Description
FTLR	Fail to Load/Run
FTOC	Fail to Open/Close
FTOP	Fail to Operate
FTR	Fail to Run
FTR<1H	Fail to Run <1H
FTS	Fail to Start
SO	Spurious Operation
UA	Unavailability (Maintenance or State of another component)

7 ISO SYSTEM DESCRIPTION

This analysis focused on the ability of the ISO system to start and provide design-rated core cooling for its required mission time.

The data used in this report are limited to the set of plants listed in Table 7. This analysis focused only on the isolation condenser's emergency core cooling system (ECCS) function to reduce reactor pressure and remove fission product decay heat. The containment isolation function of the system was not evaluated in this study.

Table 7. BWR plants with a dedicated ISO system.

Plant name	Docket	Trains	Total number of ISO condensers	Number of condensers per train	Condenser design	Time before make-up is required (min)
Dresden 2	237	1	1	1	Dual-pass	20
Dresden 3	249	1	1	1	Dual-pass	20
Millstone 1 ³	245	1	1	1	Dual-pass	30
Nine Mile Pt. 1	220	2	4	2	Single-pass	90
Oyster Creek	219	2	2	1	Dual-pass	45

The ISO system is a standby high-pressure system that removes residual and decay heat from the reactor vessel in the event of a scram in which the reactor becomes isolated from the main condenser, or if any other high pressure condition exists. Also, at most plants, the ISO system aids in reactor vessel depressurization in the event that either (depending on plant design) the feedwater coolant injection or high-pressure coolant injection system fails. Because of its role in emergency core cooling, the ISO system is designated as an emergency core cooling system (ECCS). The ISO system is a single-train system in three plants and dual-train system in the other two plants. Figure 3 provides a simplified single train ISO system diagram. This configuration is typical of the single train plants and is effectively doubled for the dual-train plants. Four plants have a single dual-pass isolation condenser per train, while one plant (Nine Mile Pt. 1) has two single-pass isolation condensers per train.

The ISO system transfers residual and decay heat from the reactor coolant to the water in the shell side of the heat exchanger resulting in steam generation. The steam generated in the shell side of the heat exchanger is then vented to the outside atmosphere. The system employs natural circulation as the driving head from the reactor steam side, through the isolation condenser tubes, and back to the reactor.

A typical ISO system is designed to handle three percent reactor power, which means that five minutes after a scram and initiation of the ISO system, the heat removal capacity of the system equals the decay heat production rate of the shutdown reactor. Therefore, reactor water inventory will only be lost through the relief valves for five minutes following a scram and isolation. This represents a minor loss relative to the vessel inventory.

The ISO system is typically required to be operable when there is fuel in the reactor vessel and steam is being produced. During normal operation the isolation condensers are in standby, and are placed in service automatically when needed to provide heat transfer to the environment. In the stand-by

³ Decommissioned.

condition, the steam isolation valves are open so that the condenser tube bundles are at reactor pressure. Condensate builds up in the condenser and condensate return piping; the condensate is prevented from returning to the reactor by having one of the condensate return valves for that train closed. The steam lines contain vent valves, which are open to vent air and noncondensibles to the main steam system. Collection of air or noncondensable gases in the ISO system could prevent natural circulation flow. The initiation signal places the ISO system into operation by opening the condensate return isolation valve. This valve can also be remotely operated from the control room.

The ISO system operates in a closed loop mode. Steam rises from the reactor vessel to the condenser where it is condensed by boiling the water in the condenser shell. As the reactor steam condenses, it returns by gravity flow through the condensate return valve to the suction of a reactor recirculation pump and thus to the reactor vessel. The water inventory on the shell side of the condenser will provide heat removal for between 20 and 90 minutes depending on the plant design, at which time makeup water must be provided to prevent uncovering the condenser tubes. The sources of makeup water are a combination of condensate water, demineralized water, or the fire water system depending on individual plant design. One plant (Nine Mile Pt. 1) has gravity fed makeup water tanks, which can supply enough water for eight hours of operation before additional makeup is required.

The ISO system instrumentation and control consists of initiation and containment isolation circuitry. These circuits provide different functions, both of which are important to system reliability. The initiation circuitry provides for automatic and manual start of the system. The purpose of the containment isolation circuitry is to initiate closure of appropriate primary containment isolation valves to limit fission product release should a steam line rupture occur.

The ISO system is automatically initiated if a high reactor pressure condition is sustained for 15 seconds. The time delay prevents unnecessary system initiation during turbine trips. Also at most plants, the ISO system automatically initiates on a low vessel water level to aid in reducing reactor pressure for small line breaks. The isolation condenser system can be operated manually by opening the condensate return valve. The ISO system is designed to provide core cooling regardless of whether electrical power is available.

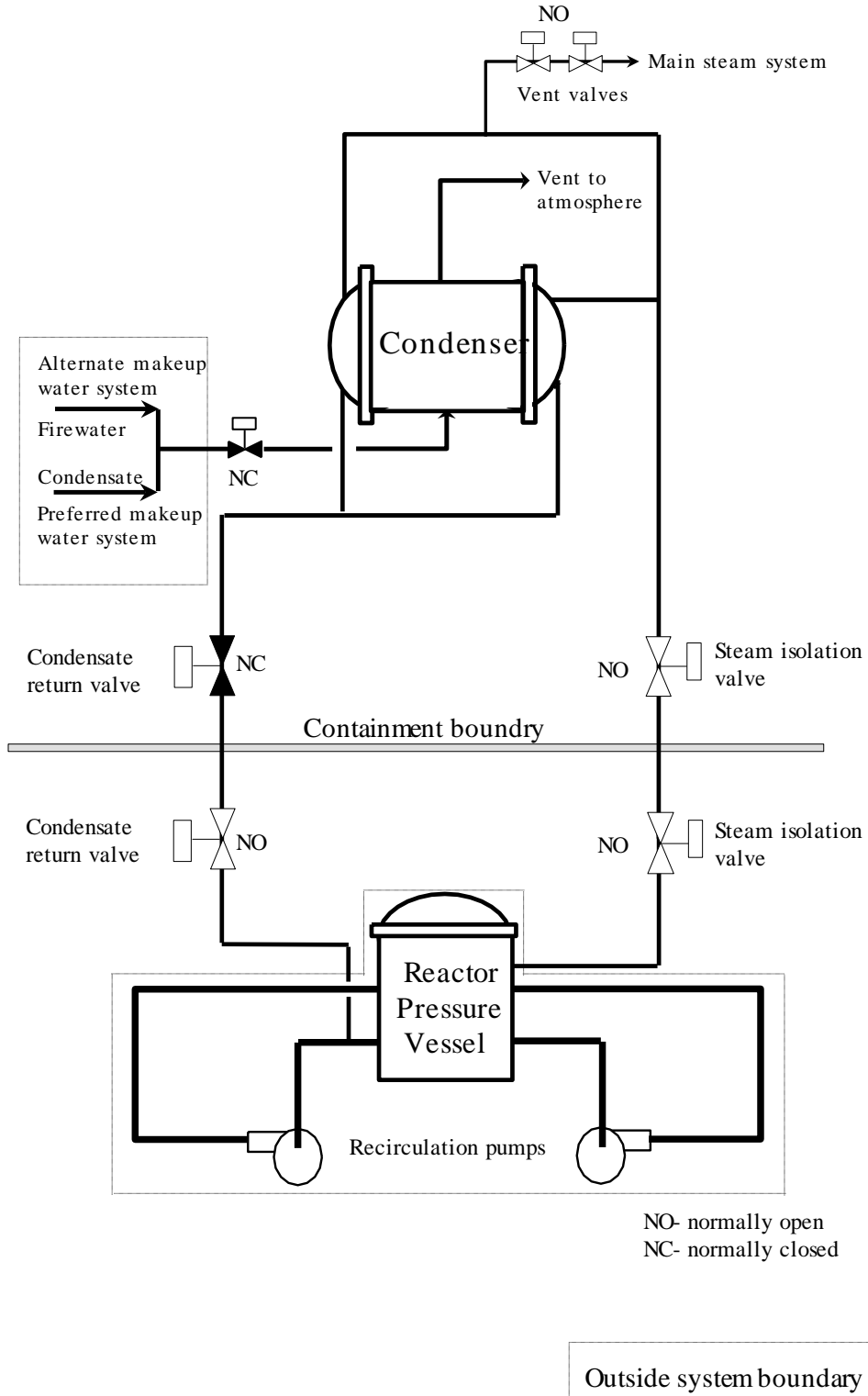


Figure 3. Simplified single train isolation condenser system schematic.

The ISO system is automatically isolated if high ISO steam flow or condensate return flow is sensed indicating a line break (Group V isolation). This isolation shuts all the steam and condensate isolation valves and the steam line vent valves, rendering the ISO system inoperable. The steam line vent valves will also automatically shut on a low vessel water level condition (Group I isolation). Isolation of the vent valves for a prolonged period could render the heat exchanger inoperable due to the buildup of non-condensable gases. However, failure of this circuit to close the vent valves would not preclude operation of the system.

8 REFERENCE

1. S.A. Eide, et al, *Industry-Average Performance for Components and Initiating Events at U.S. Commercial Nuclear Power Plants*, U.S. Nuclear Regulatory Commission, NUREG/CR-6928, February 2007.