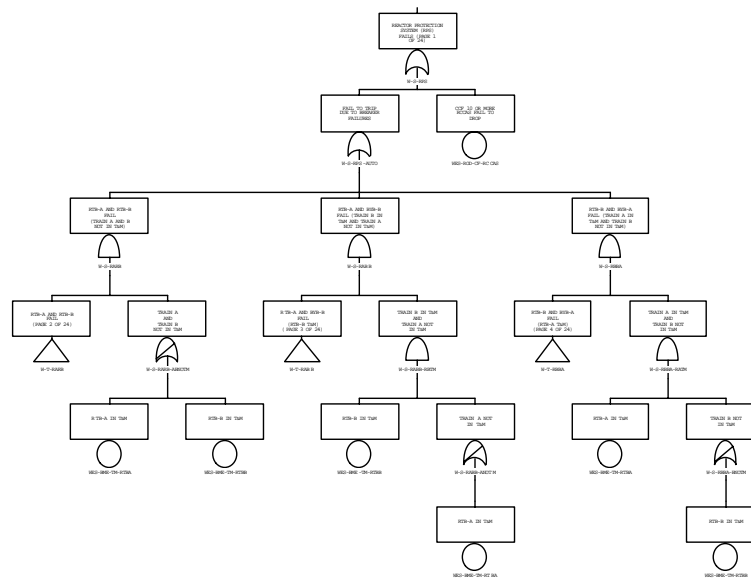


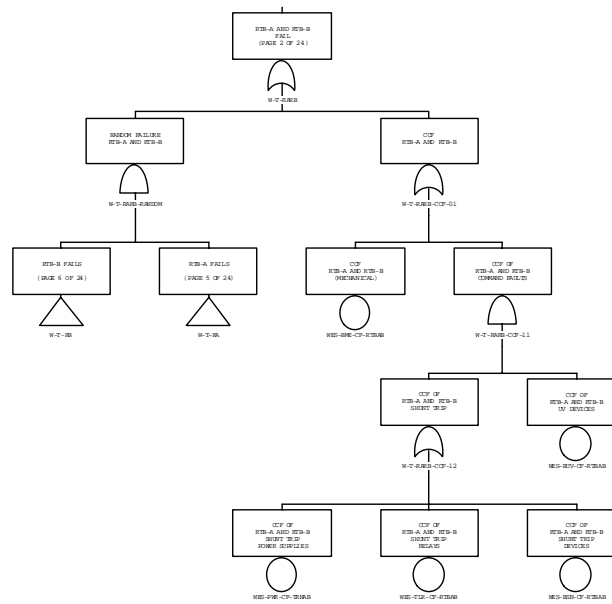
Westinghouse RPS Fault Tree

This appendix contains the Westinghouse reactor protection system fault tree used for both the Analog Series 7300 and Eagle-21 RPS designs. A house event is used to switch between the two designs.

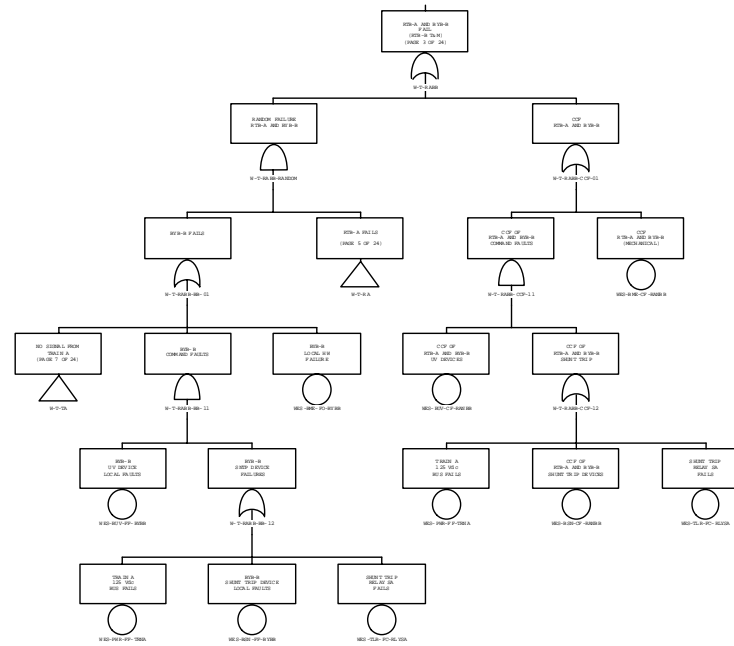
REACTOR PROTECTION SYSTEM (RPS) FAILS
(PAGE 1 OF 24)



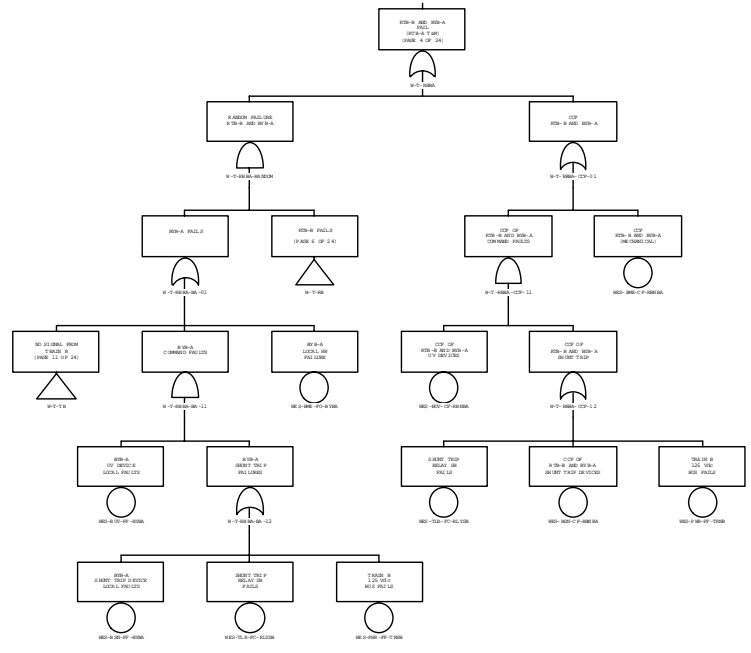
RTB-A AND RTB-B FAIL
(PAGE 2 OF 24)



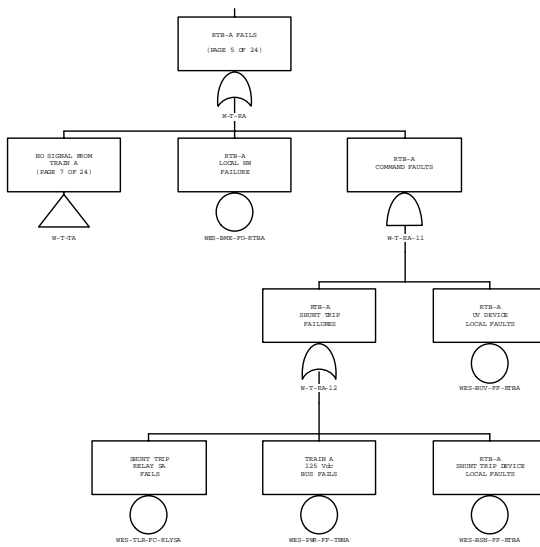
RTB-A AND BYB-B FAIL (RTB-B IN T&M)
(PAGE 3 OF 24)



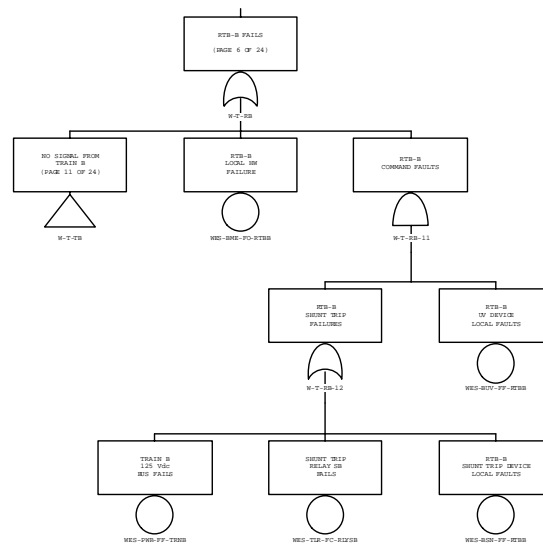
RTB-B AND BYB-A FAIL (RTB-A IN T&M)
(PAGE 4 OF 24)



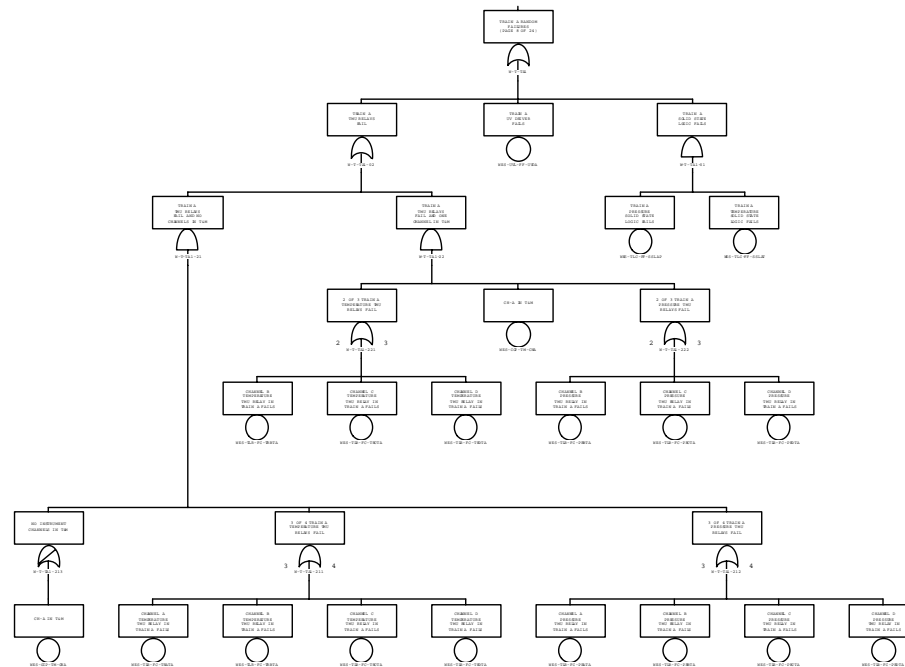
RTB-A FAILS
(PAGE 5 OF 24)



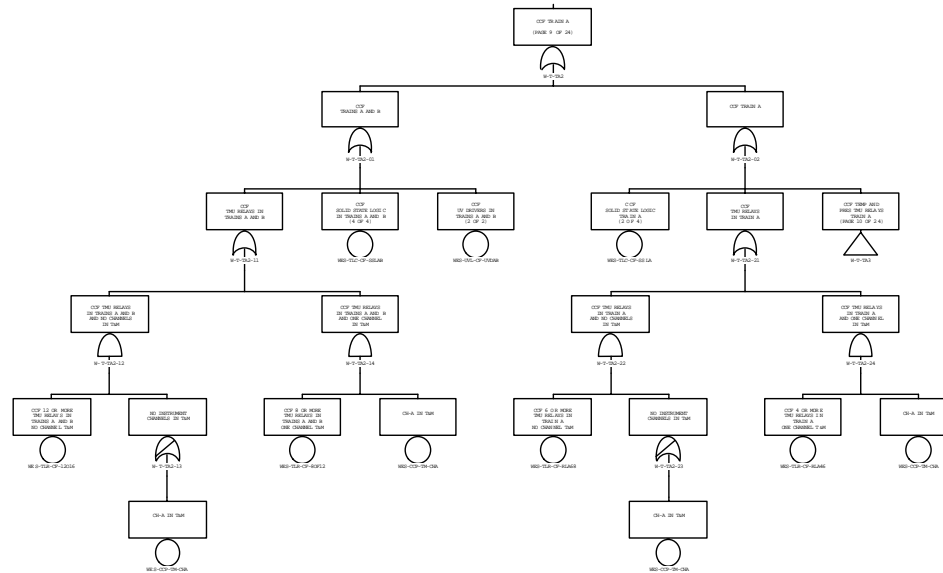
RTB-B FAILS
(PAGE 6 OF 24)



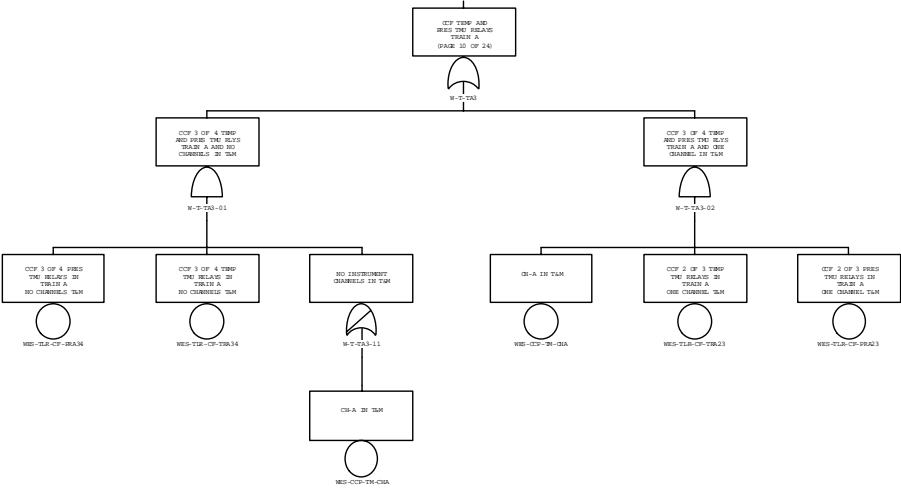
TRAIN A RANDOM FAILURES
(PAGE 8 OF 24)



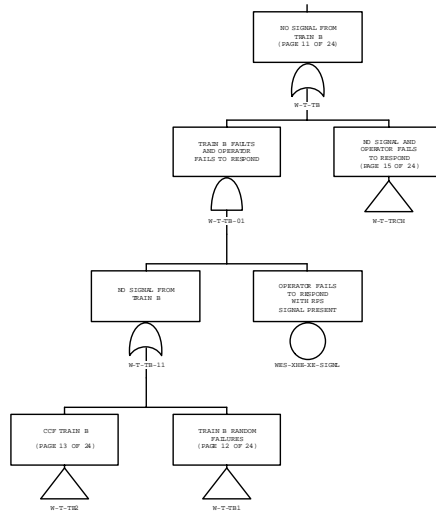
CCF TRAIN A
(PAGE 9 OF 24)



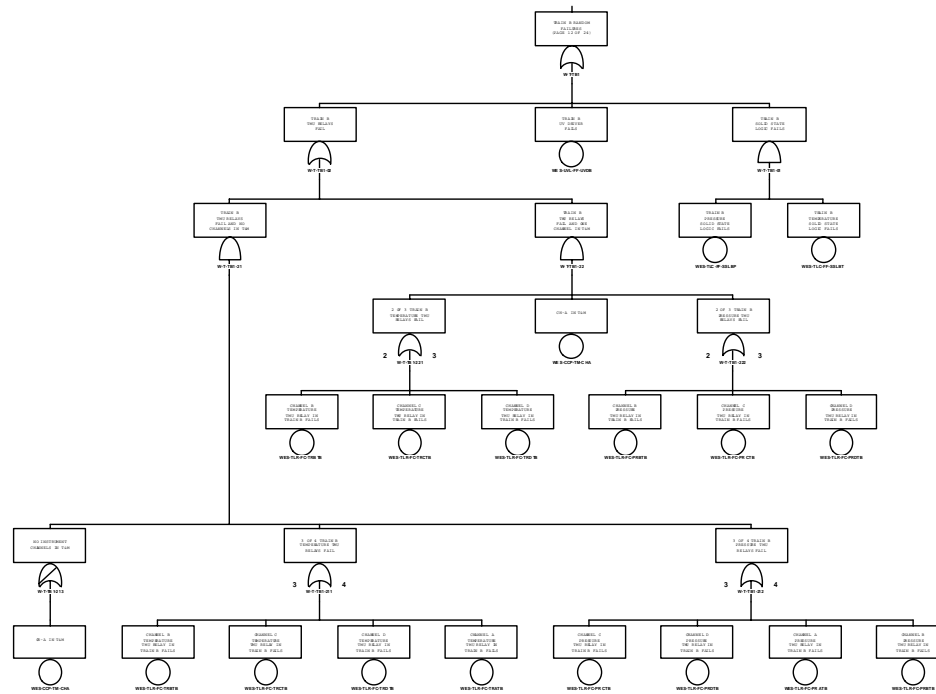
CCF TEMP AND PRES TMU RELAYS TRAIN A
(PAGE 10 OF 24)



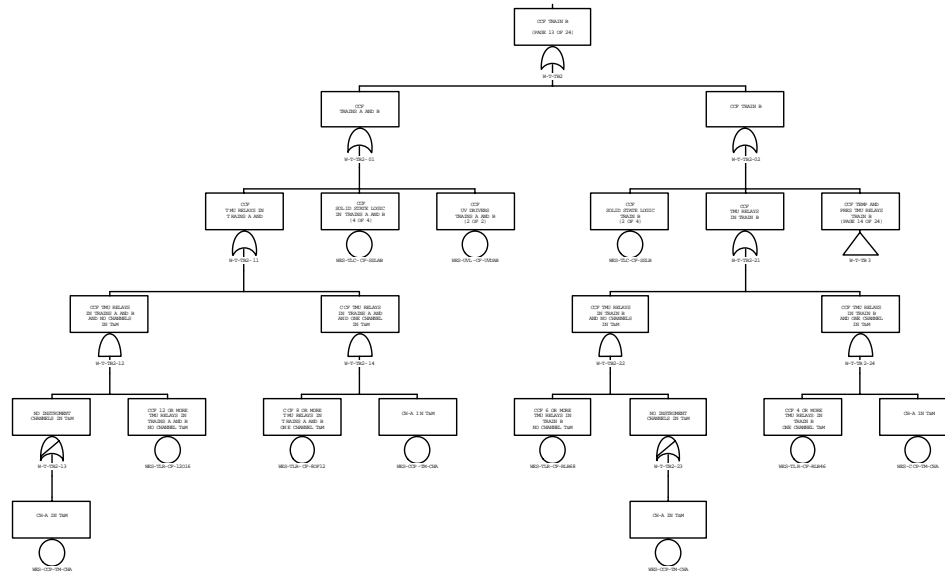
NO SIGNAL FROM TRAIN B
(PAGE 11 OF 24)



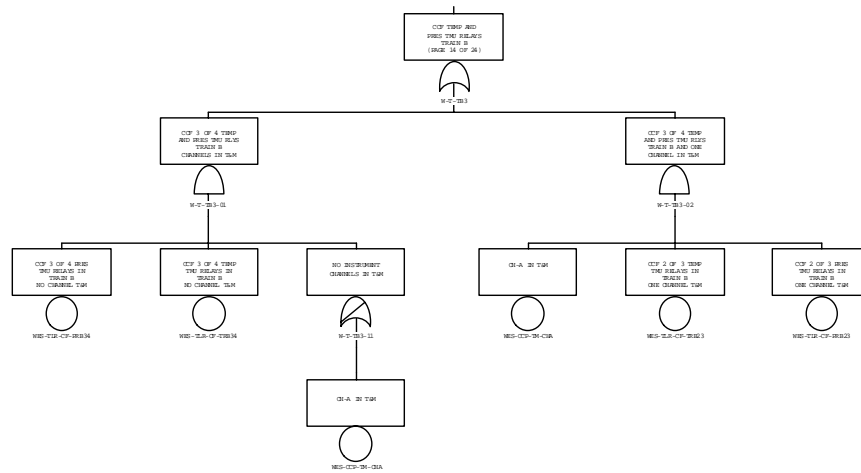
TRAIN B RANDOM FAILURES
(PAGE 12 OF 24)



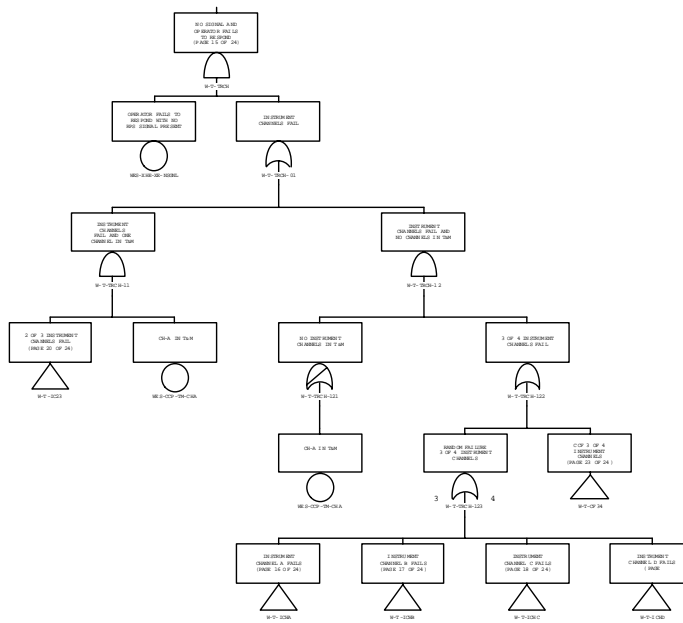
CCF TRAIN B
(PAGE 13 OF 24)

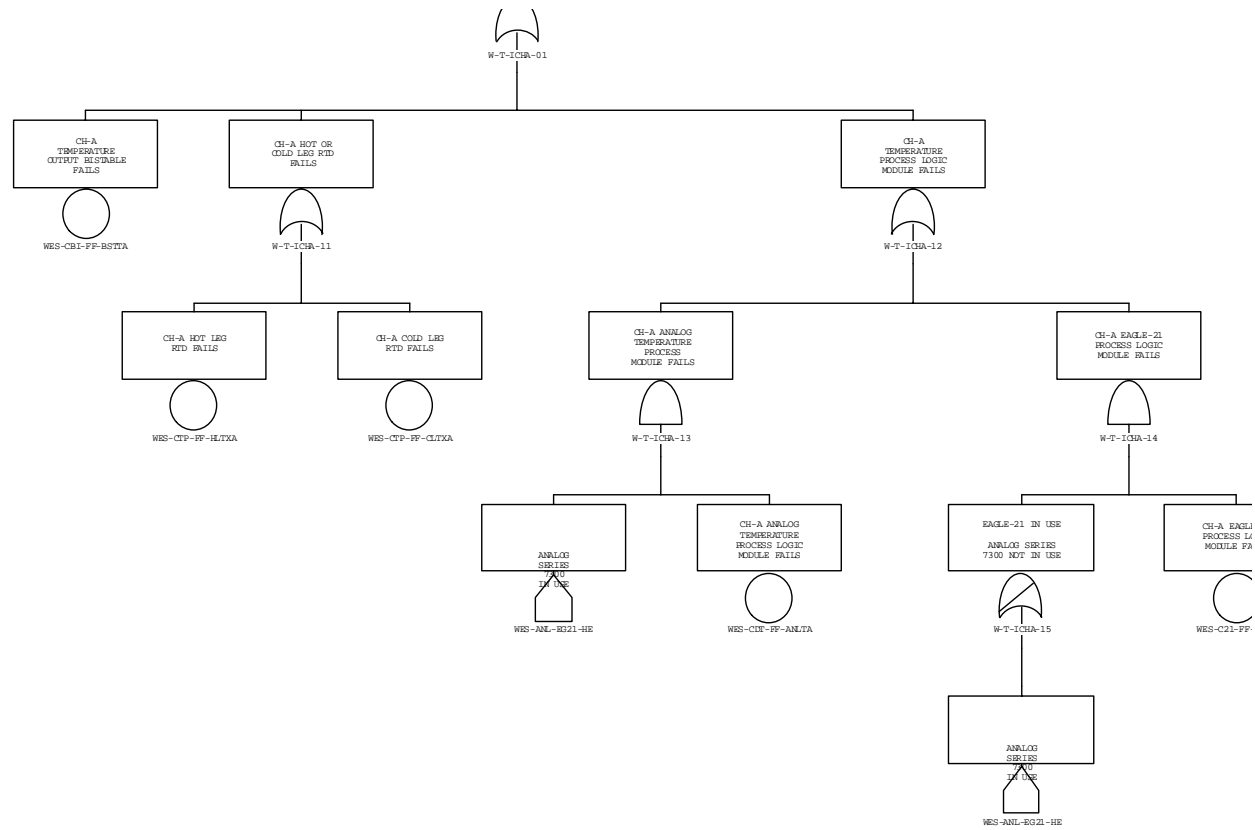


CCF TEMP AND PRES TMU RELAYS TRAIN B
(PAGE 14 OF 24)

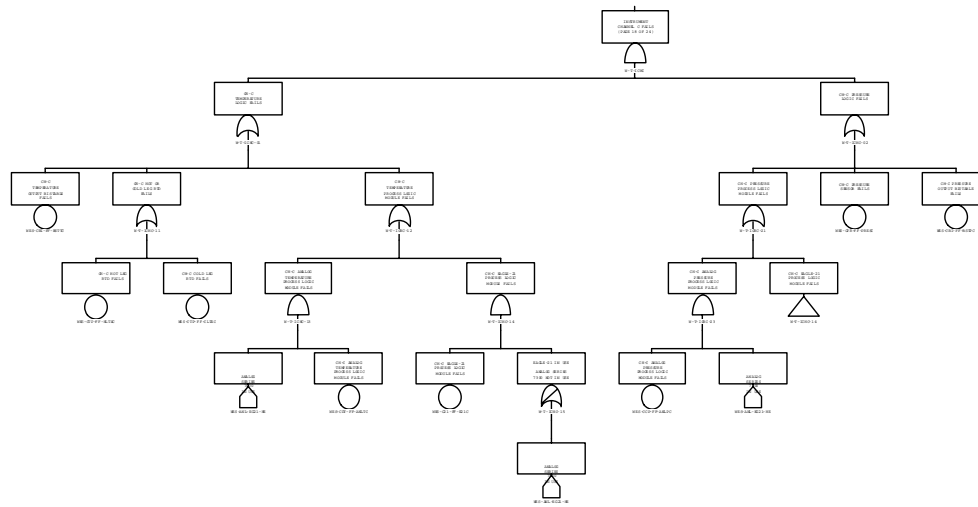


NO SIGNAL AND OPERATOR FAILS TO RESPOND
(PAGE 15 OF 24)

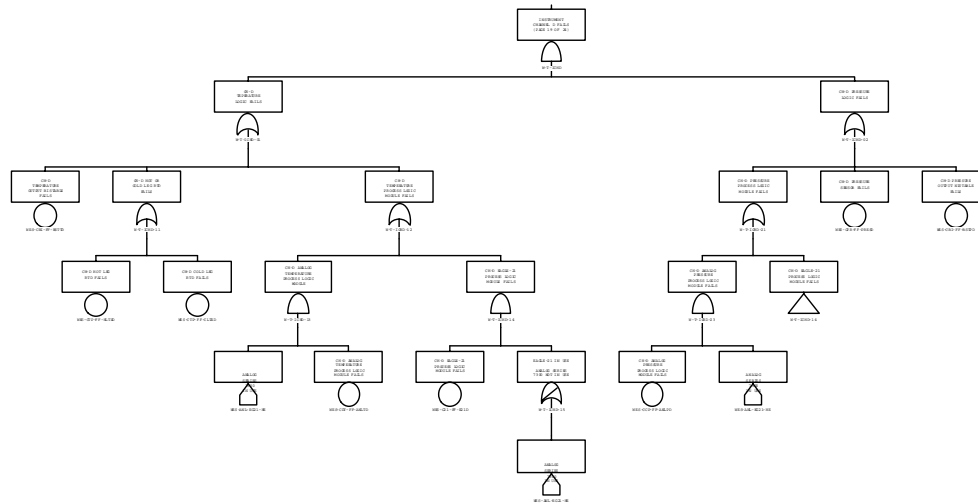




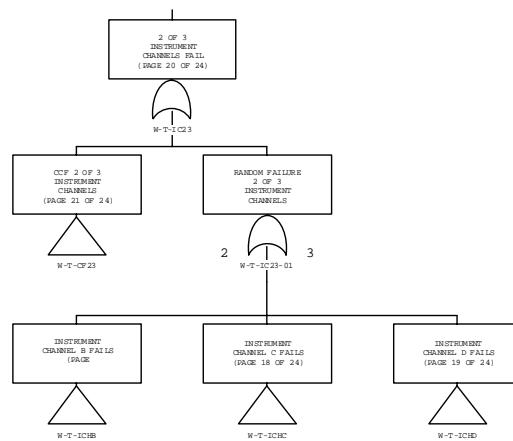
INSTRUMENT CHANNEL C FAILS
(PAGE 18 OF 24)



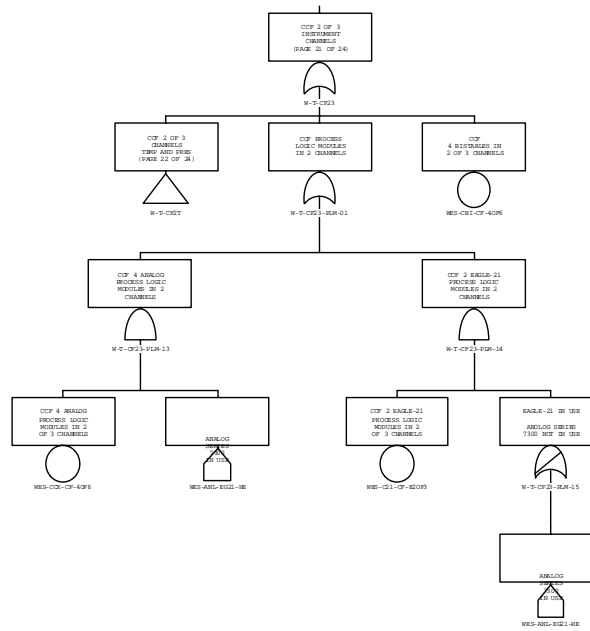
INSTRUMENT CHANNEL D FAILS
(PAGE 19 OF 24)



2 OF 3 INSTRUMENT CHANNELS FAIL
(PAGE 20 OF 24)



CCF 2 OF 3 INSTRUMENT CHANNELS
(PAGE 21 OF 24)



CCF 2 OF 3 CHANNELS TEMP AND PRES
(PAGE 22 OF 24)

